



Lighting Fixtures Brochure

SPECIALIZED / CUSTOMIZED SERVICES



Premium
Hotline

8851 5998

Head Office: No.2A Bldg, Skyworth InnovationValley,Shiyan Street,Bao'An,
Shenzhen,Guangdong,P.R.C
Branch Factory: Gangsui Industrial Zone,Gangkou,Zhongshan, Guangdong,P.R.C

This information is for reference only and does not constitute any form of commitment. Please refer to the actual product (including but not limited to color, size, appearance structure, etc.)If there is any inconsistency between this information and the promotion, please refer to the actual product without prior notice.

Lighting Series III | foreign market

Light Green International Co., Ltd.

LIGHT GREEN

Specializing in the production of lighting fixtures
strength manufacturers

—
Highlighting Products
Every sparkle deserves to be seen

Innovative
Unique aesthetic lines and artisanal details
Locking in every inch of light

—
Product Lineup No. 3 | Overseas Markets

Corporate Social Accounts



Facebook: Light Green



Linkin: Light Green International Co.,Ltd



Youtube: LightGreen-01



Instagram: lightgreenled



Tiktok : lightgreen_led2

Salesman Email

cicilee@light-green.cn WhatsApp: +0086 13392892737

sophie.zhang@light-green.cn WhatsApp: +0086 18948744020

01 ENTERPRISE CHAPTER

02 PRODUCT CHAPTER

01

Enterprise Chapter

who are we?

—

Company Profile

Milestones

Dominance

Company Profile

公司简介

Light Green International Co.,LTD.

(abbreviation:LightGreen) was established in 2007 and was awarded as a NationalHigh-Tech Enterprise in 2011.With an industrial base of more than 10,000 square meters, is a professional lighting company engaged in the development and production of LED intelligent lighting and small area lighting products, sales and service in one.We have served many famous international and domestic lighting brands for many years and have 15 years of working experience in the industry. We are always committed to providing high quality lighting fixtures to our global customers.

Компания Shenzhen Green Semiconductor Lighting Company Limited (далее: Light Green) была основана в 2007 году, в 2011 году получила звание национального высокотехнологического предприятия.Имеет производственную базу площадью более 10 000 кв. м, занимается разработкой светодиодных интеллектуальных светильников и продукции для освещения небольших территорий, а также производством, продажей, обслуживанием в одной из профессиональных светотехнических компаний.За годы работы мы обслуживали многие международные и отечественные известные светотехнические бренды, имея 15-летний опыт работы в данной отрасли. Мы всегда стремимся обеспечить высокое качество осветительных приборов для глобальных клиентов.

شنتشن الأخضر الإضاءة أشباه الموصلات المحدودة (مختصر النحو : الإضاءة الخضراء) تأسست في عام 2007 ، في عام 2011 ، كما تم تقييم التكنولوجيا العالمية المشاريع الوطنية . الذكية ، فضلا LED مع قاعدة صناعية من أكثر من 10000 متر مربع ، هي شركة تعمل في مجال الإضاءة عن تطوير منتجات الإضاءة الإقليمية الصغيرة والإنتاج والمبيعات والخدمة في واحدة من شركات الإضاءة المهنية . على مر السنين في خدمة الدولية والمحلية العديد من العلامات التجارية المعروفة الإضاءة مع 15 عاما من الخبرة في العمل في هذه الصناعة . ونحن ملتزمون دائما لتزويد العملاء في جميع أنحاء العالم مع تركيبات الإضاءة عالية الجودة .

<http://www.light-green.cn/>



Light Green has a number of industry-experienced product development engineers, covering industrial design/structural design/electronic design and other areas of expertise, for the company's products continue to innovate a steady stream of power.

В компании Green Lighting работает целый ряд инженеров по разработке продукции с богатым опытом работы в отрасли, охватывающим промышленный дизайн/конструктивный дизайн/электронный дизайн и другие области знаний, благодаря чему продукция компании продолжает обновлять постоянный поток энергии.

الإضاءة الخضراء لديها العديد من المهندسين ذوي الخبرة في تطوير المنتجات في هذه الصناعة ، بما في ذلك التصميم الصناعي / التصميم الهيكلي / التصميم الإلكتروني وغيرها من المجالات من المهنيين ، منتجات الشركة من أجل استمرار تدفق الابتكار .

The company invested in the production scale operation of the intelligent production line, million cold bending forming equipment to create the first precedent in the lamp industry, the introduction of 15 sets of advanced automatic forming wheel pressure machine, from the steel body to the lamp body every 25 seconds to form a new environmentally friendly materials, without the need for secondary processing of the scale of the powerful. Can meet the market's high demand for customised lamps and lanterns, as well as the output ratio of production efficiency, has a big help to improve the delivery rate of customers.

Компания инвестировала в масштаб производства интеллектуальной производственной линии, миллион холодной гибки формовочного оборудования, чтобы создать первый прецедент в ламповой промышленности, внедрение 15 комплектов передовых автоматических формовочных колесо давления машины, из стального корпуса в корпус лампы каждые 25 секунд, чтобы сформировать новый экологически чистых материалов, без необходимости вторичной обработки масштаба мощный. Может удовлетворить высокий спрос рынка на индивидуальные лампы и фонари, а также выходной коэффициент эффективности производства, имеет большую помощь в улучшении скорости доставки клиентов.

وقد استثمرت الشركة في خط الإنتاج الذكي في حجم الإنتاج والتشغيل ، مليون درجة الانحناء الباردة تشكيل المعدات لإنشاء أول سابقة في صناعة الإضاءة ، وإدخال 15 متقدمة التلقائي تشكيل عجلة الصحافة آلة واحدة ، من الصلب إلى مصباح الجسم كل 25 ثانية تشكيل ، مواد جديدة صديقة للبيئة ، لا تحتاج إلى معالجة الثانوية قالب قوي . فائدة نموذج يمكن أن تلبية متطلبات عالية من مصباح التخصص في السوق ، ونسبة الإنتاج من كفاءة الإنتاج ، لديها مساعدة كبيرة ، وتحسين معدل تسليم العملاء .

Light Green maintains a leading position in the lighting industry by virtue of efficient management, strong R&D strength, production capacity and sales ability, quickly meets the customised needs of customers, and its products are exported to domestic and international markets, providing professional lighting fixtures for customers all over the world.

Компания Green Lighting занимает лидирующие позиции в светотехнической отрасли благодаря эффективному управлению, мощным научно-исследовательским разработкам, производственным мощностям и сбытовым возможностям, быстро удовлетворяет индивидуальные потребности клиентов, а ее продукция экспортируется на внутренний и международный рынки, обеспечивая профессиональными светильниками клиентов по всему миру.

الإضاءة الخضراء مع إدارة فعالة ، قوية قوة البحث والتطوير ، والقدرة على الإنتاج والقدرة على المبيعات في صناعة الإضاءة للحفاظ على مكانتها الرائدة ، بسرعة لتلبية احتياجات العملاء حسب الطلب ، ويتم تصدير المنتجات إلى الأسواق المحلية والأجنبية ، لتزويد العملاء مع الإضاءة المهنية .

<https://www.lvselight.com/>

Milestones

发展历程

2007年

公司成立

Light Green officially established in 2007.
В 2007 году официально основана Shenzhen Green Semiconductor Lighting Co., Ltd.
في عام ٢٠٠٧، وشنتشن الأخضر أشباه الموصلات الإضاءة

2010年

出口第一

In 2010, increased capital to 20 million CNY, annual export for side lighting series exceeded 100,000 sets, keep TOP1 ranking of LED panel light export.

В 2010 году прирост составил 20 млн. юаней, годовой экспорт серии светоизлучающих изделий превысил 100 тыс. комплектов, в течение четырех лет подряд экспорт светодиодных плоских ламп занимал первое место в стране.

في عام ٢٠١٠، بزيادة رأس المال من ٢٠ مليون يوان، سلسلة من المنتجات الجانب مضيئة الصادرات السنوية أكثر من ١٠٠،٠٠٠ مجموعات، لمدة ٤ سنوات متتالية للحفاظ على لوحة مسطحة الصمام مصباح الصادرات في المرتبة الأولى في البلاد.

2012年

发明专利

In 2012, we entered into cooperation with the Broadband Semiconductor Research Center of Peking University and obtained the patent of product invention.

В 2012 году мы заключили сотрудничество с Исследовательским центром широкополосных полупроводников Пекинского университета и Высшей школой Университета Цинхуа и получили патенты на изобретения.

في عام ٢٠١٢، مع جامعة بكين مركز بحوث أشباه الموصلات ذات النطاق العريض، جامعة تسينغها، كلية الدراسات العليا إلى التعاون والحصول على براءة اختراع المنتج.

2015年

线条灯具

In 2015 the same year to China's the company invested in large assets of intelligent production equipment to lead the new trend of commercial lighting.

В 2015 году компания инвестировала большие средства в приобретение интеллектуального производственного оборудования, чтобы возглавить новую тенденцию в производстве линейных светильников для коммерческого освещения.

في عام ٢٠١٥، استثمرت الشركة في الأصول الكبيرة لشراء معدات الإنتاج الذكية، مما يؤدي إلى الاتجاه الجديد من خط الإضاءة التجارية.

2018年

智能生产

In 2018, the company used millions of investment to build the pioneering automatic molding line in the lighting industry.

В 2018 году компания инвестировала миллионы в интеллектуальное оборудование для создания первой в светотехнической отрасли автоматической линии сборки пресс-форм.

في عام ٢٠١٨، استثمرت الشركة أكثر من مليون من المعدات الذكية لخلق صناعة الإضاءة، أول خط التجميع التلقائي تشكيل.

2021年-至今

扩大规模

The company was officially established in Zhongshan City at the end of 2021. Shenzhen company is mainly engaged in intelligent product development and internet platform development.

В конце 2021 года компания официально открыла филиал в городе Чжуншань. Компания занимается в основном разработкой интеллектуальных продуктов и созданием платформ.

بحلول نهاية عام ٢٠٢١، أنشأت الشركة رسمياً فرع في مدينة تشونغشان. الشركة الرئيسية تطوير المنتجات الذكية منصة التنمية.

Dominance

生产优势

设备优势

The company has invested in intelligent production lines in the production scale operation, the million cold bending molding equipment to create the first precedent in the lamp industry. The introduction of 15 sets of advanced automatic molding clip body press, from the steel body to the lamp body molding every 25 seconds. New environmentally friendly materials without secondary processing, powerful scale. Can meet the market's high demand for customized lamps and lanterns.

Компания инвестировала средства в интеллектуальные производственные линии в масштабе производства, а также миллион единиц оборудования для холодной гибки и формовки, чтобы создать первый прецедент в индустрии ламп и фонарей. Внедрение 15 комплектов передовых автоматических прессов для формирования корпуса лампы, от стального корпуса до корпуса лампы, формируемого каждые 25 секунд. Новые экологически чистые материалы без вторичной обработки, мощный масштаб. Может удовлетворить высокий спрос рынка на индивидуальные лампы и фонари.

وقد استثمرت الشركة في خط الإنتاج الذكي في عملية الإنتاج على نطاق واسع ، مما يجعل من أول سابقة في صناعة الإضاءة من قبل الملايين من الصف الباردة الانحناء تشكيل المعدات . استيراد ١٥ متقدمة التلقائي تشكيل آلة الضغط المنظم ، من الجسم الصلب مصباح الجسم كل ٢٥ ثانية تشكيل . نوع جديد من المواد الصديقة للبيئة لا تحتاج إلى المعالجة الثانوية ، على نطاق واسع . فائدة نموذج يمكن أن تلبي متطلبات عالية من السوق على مصباح التخصص .

性价比高

High quality and low price compared with aluminum chandelier. The same quality is at least 30% cheaper than aluminum pendant lights. Similar price compared to bent iron lamps. Comparable to the exquisite craftsmanship of aluminum, spend the same price to buy better products.

Высокое качество и низкая цена по сравнению с алюминиевыми подвесными светильниками. При том же качестве подвесные светильники дешевле алюминиевых не менее чем на 30%. Аналогичная цена по сравнению со светильниками из гнутого железа. Сравнимо с изысканным мастерством алюминия, потратите ту же цену, чтобы купить более качественные изделия.

مقارنة مع الألومنيوم مصباح معلق ، عالية الجودة ، وانخفاض الأسعار . نوعية مماثلة على الأقل ٣٠٪ أرخص من الألومنيوم الثريا . مقارنة مع الانحناء مصباح الحديد المطاوع ، السعر قريب . مقارنة مع الألومنيوم غرامة الحرفية ، تنفق نفس السعر لشراء أفضل المنتجات .

配件齐全

Hanging wire, hanging rod, ceiling, square pass, bridge and other various installation methods, basically meet the market demand for splicing solutions, can do shadowless splicing effect.

Подвесной провод, подвесная штанга, потолок, квадратный проход, мост и другие различные методы установки, в основном удовлетворяют рыночный спрос на решения по сращиванию, могут выполнять эффект бесшовного сращивания.

شماعات ، شماعات ، سقف ، مربع ، جسر ، الخ ، والتي يمكن أن تلبي الطلب في السوق ، ويمكن تحقيق تأثير الظل الربط .



• 定制化服务

Customised services
Индивидуальные услуги
خدمة مخصصة

• 个性化照明

Personalised Lighting
Индивидуальное освещение
الإضاءة الشخصية

• 模组化设计

Modular design
Модульная конструкция
تصميم وحدات

• 快速化响应

Rapid response
Быстрое реагирование
استجابة سريعة

01 ENTERPRISE CHAPTER

02 PRODUCT CHAPTER

02

Product Chapter

Our Products

Linear light

A series (Wisdom Series)

B series (Magic Change series)

C series (Changeable series)

D series (Zhifang Series)

E series (Pilot series)

F series (Leader Series)

Light Strip

MiNi light Strip

Polarized light Strip

Smart Switch

Rotary switch
Scenario Panel

Soft Film Ceiling Series

A series

Wisdom Series

SMART SERIES LINEAR LIGHT

Product Features

This series of products is main promotion intelligent product that can achieve up and down lighting output+reflective cup+magnetic suction end cap (end cap no need to be fixed with screws, aesthetics and high-end overall)+dual CCT dimming and color adjustment. Equipped with rotary switch,makes more intelligent dimming , and the control communication method adopts a 0-10V solution.

F735 model

This product adopts a design of up & down luminescence and reflective cup, achieving deep anti-glare,health eye-protection function, with an anti-glare value of 13. It supports screwless magnetic suction end caps and provides diversified customized service solutions.

PRODUCT POWER: 36W

PRODUCT COLOR TEMPERATURE: 27000-6500K

PRODUCT SIZE: 1200X70X35MM

Installation method:

suspension wire suspension rod square pass bridge ceiling mounted

PRODUCT ADVANTAGES

Two CCT dimming Up and down emitting light
Reflective cup Magnetic suction end cap



F735 model

Intelligent linkage

Support the installation of rotary switches/dual color temperature dimming and color adjustment.

Independently developed high-performance intelligent digital screen display rotary switch+intelligent controller+intelligent dual color lamps, which can meet the independent selection of wired and wireless communication, and easily achieve intelligent lighting environment.

DALI 2.0 0-10V BluetoothMesh



APPEARANCE CHARACTERISTICS

It is a cost-effective CCT dimming and color adjustment switch with a rotary screen display and button layout, providing users with a better control experience,at the same time bringing a light smart,technology feelings intelligent decorative effect for modern home walls.

FUNCTIONAL ADVANTAGES

In the design concept of functional development,adopt dual functions of CCT dimming and brightness adjustment, which can simultaneously connect constant current and constant voltage lamp adjustment and controlling, rotary regulation+digital screen display, dual 0-10V output analog dimming signal, providing excellent visual and tactile experience.

STRUCTURAL PROPERTIES

The case is made of PC/ABS fireproof material, AC110-240V wide voltage power supply, streamlined appearance design, modern LCD digital display with buttons, and has the ability to adjust the color temperature and brightness of the lighting fixtures.

A series

Wisdom Series

Product Features

This series of products is main promotion intelligent product that can achieve up and down lighting output+reflective cup+magnetic suction end cap (end cap no need to be fixed with screws, aesthetics and high-end overall)+dual CCT dimming and color adjustment. Equipped with rotary switch,makes more intelligent dimming , and the control communication method adopts a 0-10V solution.

Independently developed high-performance intelligent digital screen display rotary switch+intelligent controller+intelligent dual color lamps, which can meet the independent selection of wired and wireless communication, and easily achieve intelligent lighting environment.

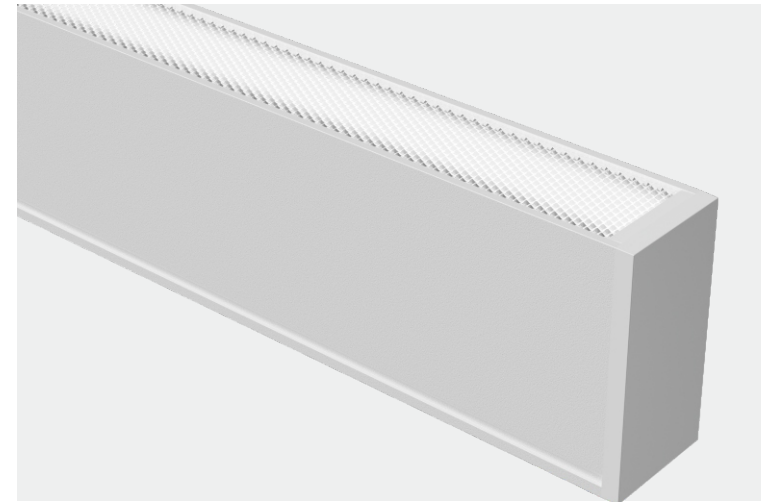
DALI 2.0 0-10V BluetoothMesh

Installation method:
suspension wire suspension rod square pass bridge ceiling mounted, etc varieties of installation accessories.

Optical accessories

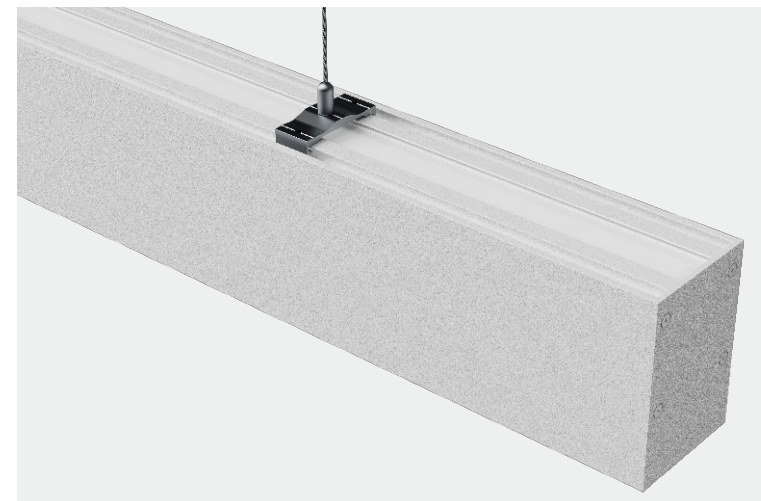
prismatic cover magnetic suction end cap aluminum profile honeycomb
prismatic plate+PC cover Upper and lower light emitting

Specification	power	Dimensions	Input voltage	CCT	CRI	Efficiency
35width	30/40W	L1196*W35*H70	AC220-240V	3000K-6500K	>80	>90Lm/W±10%
35width	8W up 32W down	L1196*W35*H70	AC220-240V	3000K-6500K	>80	>90Lm/W±10%
50width	30/40W	L1200*W50*H72	AC220-240V	3000K-6500K	>80	100Lm/W±10%
50width	8W up 32W down	L1200*W50*H72	AC220-240V	3000K-6500K	>80	100Lm/W±10%
70width	30/40W	L1200*W70*H72	AC220-240V	3000K-6500K	>80	>90Lm/W±10%
70width	8W up 32W down	L1200*W70*H72	AC220-240V	3000K-6500K	>80	>90Lm/W±10%



F835 model

This product adopts an magnetic suction structure end cap, with a power supply main wire arranged at two ends inside the lamp body. It can achieve magnetic suction end cap+external screwless design+quick plug-in and splicing+up and down lighting+prismatic plate+aluminum case.



F705 model

This product adopts a prismatic plate anti-glare cover and supports up and down light emitting mode. The outer shell is made of aluminum profile fine sand technology, which is cost-effective and practical. Built-in constant current power supply for lightning surge resistance and reliable quality.



F707 model

This product adopts an up and down luminous mode, prismatic plate+ PC cover on the up side, The PC cover can be made as a roll material to achieve seamless splicing. The outer shell is made of aluminum profiles, with a high-temperature paint and sand treatment on the surface, which has good corrosion resistance.

B series

Magic Change Series

Product Features

The shell adopts high-end aluminum profile frosting technology, supports up and down luminescence mode and is equipped with various optical accessories such as honeycomb, grille, and prismatic plate to achieve secondary light distribution effect, caring for the eyes.

Installation method:
suspension wire suspension rod square pass bridge ceiling mounted, etc varieties of installation accessories.

Splicing shape:
T-shaped, Y-shaped, X-shaped, L-shaped, hexagon-shaped, V-shaped



Optical accessories

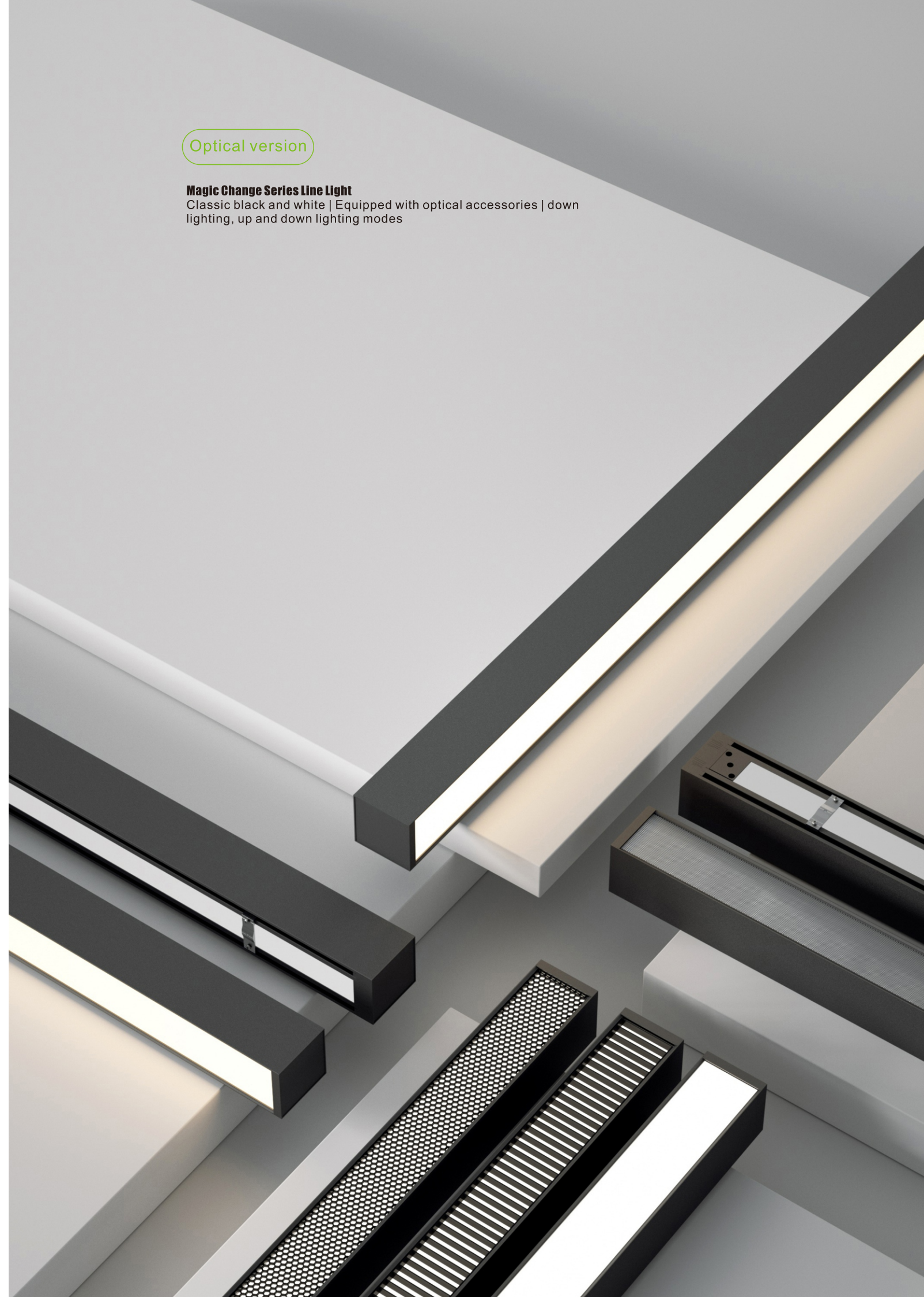
Honeycomb grille prismatic plate regular cover

Specification	power	Dimensions	Input voltage	PF	CCT	CRI	Efficiency	Color
50Width	30/40W	L1125*W50*H72	AC220-240V	0.9	3000-6500K	>80	>60lm/w±10%	Black/white
70Width	30/40W	L1125*W70*H72	AC220-240V	0.9	3000-6500K	>80	>60lm/w±10%	Black/white
70Width	30/40W	L1150*W70*H72	AC220-240V	0.9	3000-6500K	>80	>60lm/w±10%	Black/white

Optical version

Magic Change Series Line Light

Classic black and white | Equipped with optical accessories | down lighting, up and down lighting modes



C series

Economy series linear light

Product Features

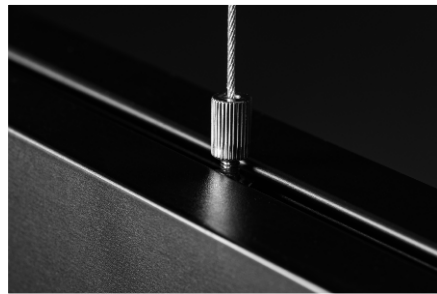
This series of products adopts new environmental friendly materials, entire lamp can achieve seamless splicing. It can be installed in various ways, advanced automatic production equipment meets the requirements of fast delivery and cost advantages.

Installation method:

suspension wire suspension rod square pass bridge ceiling mounted, etc varieties of installation accessories.

Splicing shape:

T-shaped, Y-shaped, X-shaped, L-shaped, hexagon-shaped, V-shaped



Specification	power	Dimensions	Input voltage	PF	CCT	CRI	Efficiency	Color
50width	30/40W	L1200*W50*H65	AC220-240V	0.9	3000-6500K	>80	>100lm/w±10%	Black/white
70width	30/40W	L1200*W70*H65	AC220-240V	0.9	3000-6500K	>80	>100lm/w±10%	Black/white
70 Radar	24W	L1150*W70*H72	AC220-240V	0.9	3000-6500K	>80	>100lm/w±10%	Black/white



Radar induction

Changeable series linear lights
Classic black and white|new environmental friendly materials | achieve seamless splicing





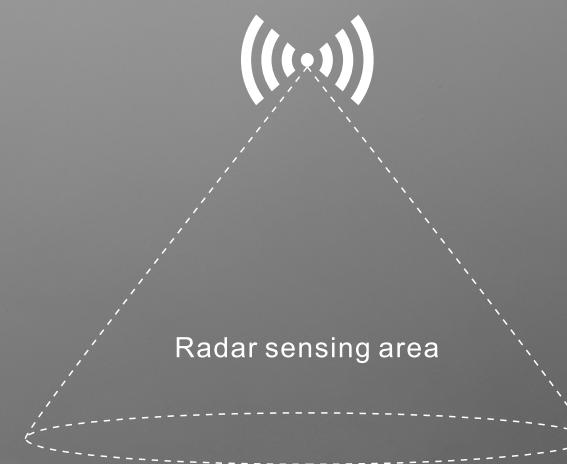
Intelligent radar sensing

This series of products is equipped with optional radar sensing function. The radar sensing device is installed inside the lamp body, providing customers with more product function choices on the premise of consistent appearance of the lamps.

Induction delay of 30 seconds

30% brightness before induction

Sensing range: radius-8P



D series

Anti-glare linear light

Product Features

This series of products uses the principle of secondary light distribution, high-end anti-glare lenses, and single 0.5W power LED. The case adopts a new environmental friendly material, color coated plate rolling process, lens/reflective cup optical design, precise anti-glare, and multiple light type designs, such as direct down lighting 30°, 60°, 90°, 120°, and double deviation 25°.

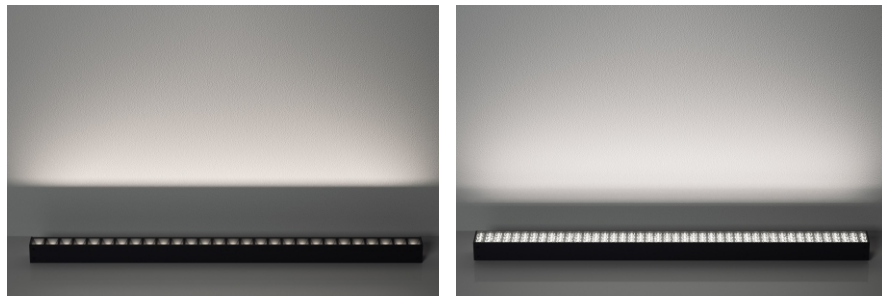
A high-end anti-glare model that can meet high lighting requirements in lighting places and supports customization.

Installation method:

suspension wire suspension rod square pass bridge ceiling mounted, etc varieties of installation accessories.

Splicing shape:

T-shaped, Y-shaped, X-shaped, L-shaped, hexagon-shaped, V-shaped

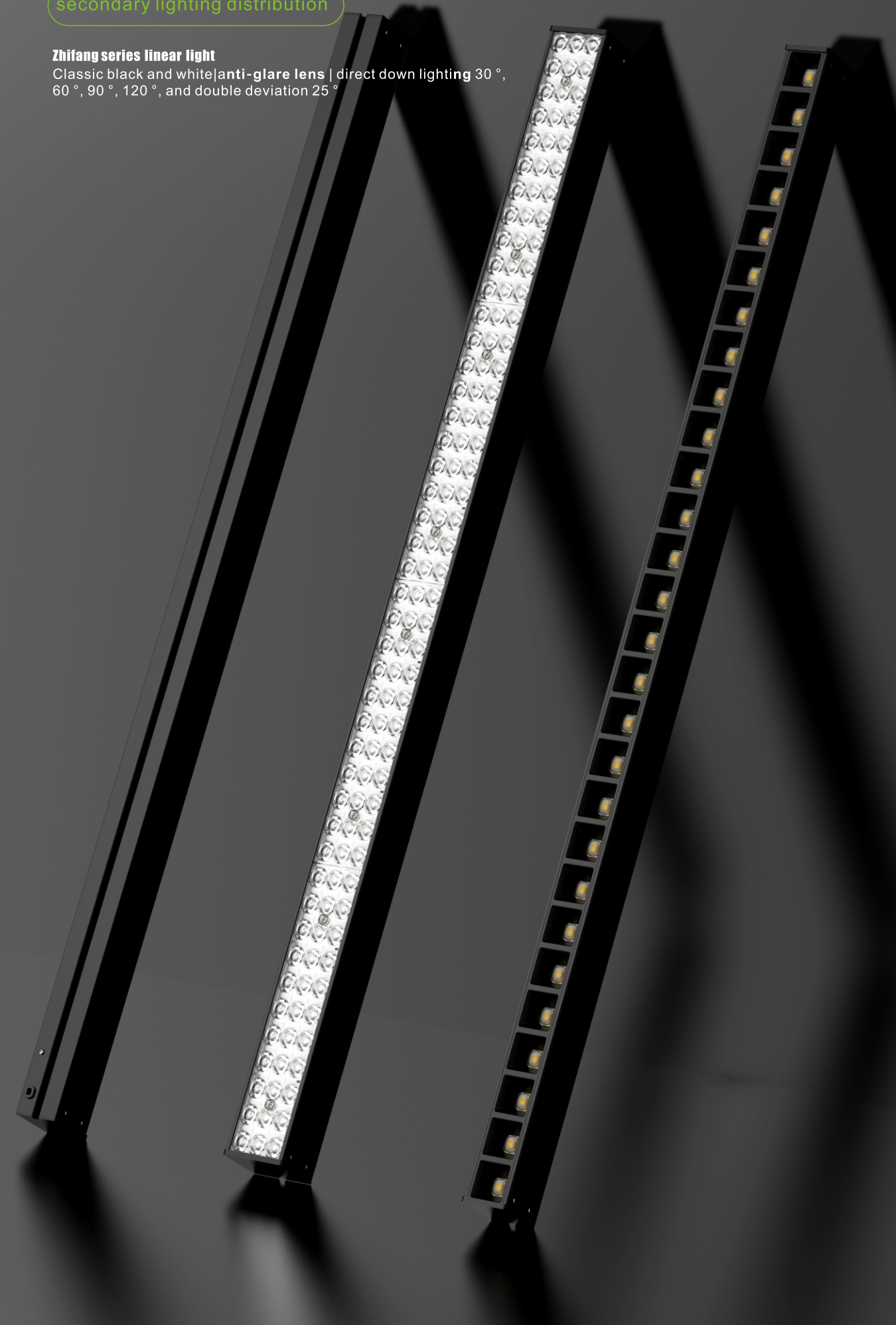


Specification	power	Dimensions	Input voltage	PF	CCT	CRI	Efficiency	Color
50width	40W	L1145*W50*H60	AC220-240V	0.9	3000-6500K	>90	>100lm/w±10%	Black/white
70width	40W	L1145*W70*H60	AC220-240V	0.9	3000-6500K	>90	>140lm/w±10%	Black/white

secondary lighting distribution

Zhifang series linear light

Classic black and white|anti-glare lens | direct down lighting 30°, 60°, 90°, 120°, and double deviation 25°



E series

Ultra thin linear light

Product Features

This product is innovatively upgraded with an ultra-thin design, and the outer shell is made of new environmental friendly materials. The color coated board is customized with a fine sand material integrated molding process. The structural design is more rigorous, and the junction between the end cap and the frame is tightly sealed without light leakage. The diffuser and outer frame are made of strong adhesive, with a sealing design that is dust-proof and insect proof.

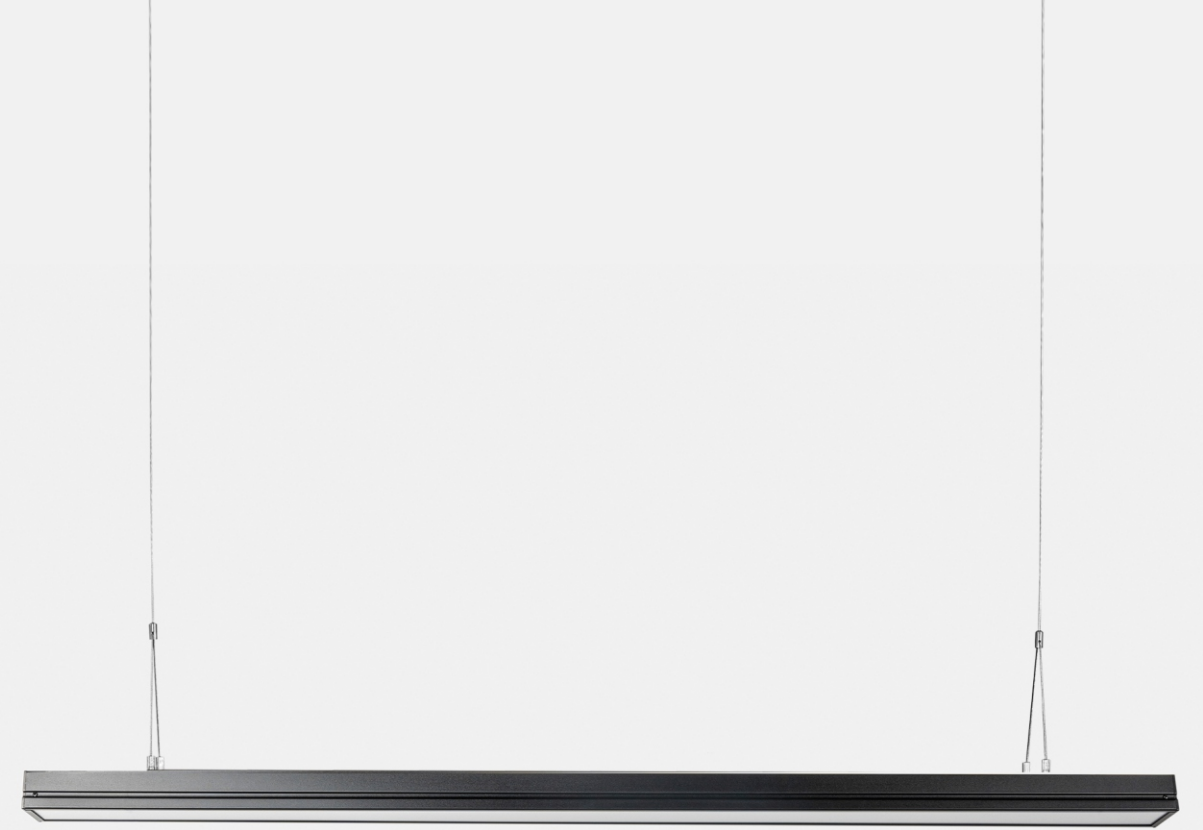
Achieving the market's favor for ultra-thin lighting products and the design concept of achieving low power and high light efficiency, high cost performance lighting linear lights, can be customized in length and have a wide range of applications.

Installation method:
suspension wire suspension rod square pass bridge ceiling mounted, etc varieties of installation accessories.

Splicing shape:
T-shaped, Y-shaped, X-shaped, L-shaped, hexagon-shaped, V-shaped



Specification	power	Dimensions	Input voltage	PF	CCT	CRI	Efficiency	Color
60width	24/36/48W	L1200*W60*H40	AC220-240V	0.9	3000-6500K	>90	>100lm/w±10%	Black/White
80width	24/36/48W	L1200*W80*H40	AC220-240V	0.9	3000-6500K	>90	>100lm/w±10%	Black/White
100width	24/36/48W	L1200*W100*H40	AC220-240V	0.9	3000-6500K	>90	>100lm/w±10%	Black/White
150width	24/36/48W	L1200*W150*H40	AC220-240V	0.9	3000-6500K	>90	>100lm/w±10%	Black/White
200width	24/36/48W	L1200*W200*H40	AC220-240V	0.9	3000-6500K	>90	>100lm/w±10%	Black/White



Ultra thin

Pilot series linear light
High cost-effective|Innovatively upgraded|Adopt new environmental friendly materials



F series

Recessed linear light

Product Features

The company adopts automatic rolling forming equipment production line, rolling process, uses color coated board material, with no dark areas on the illumination surface and no flicker when emitting light. The PC cover is soft, flexible, and not easily broken. It can be seamlessly spliced into a light strip, resulting in uniform and soft light output, and excellent overall effect.

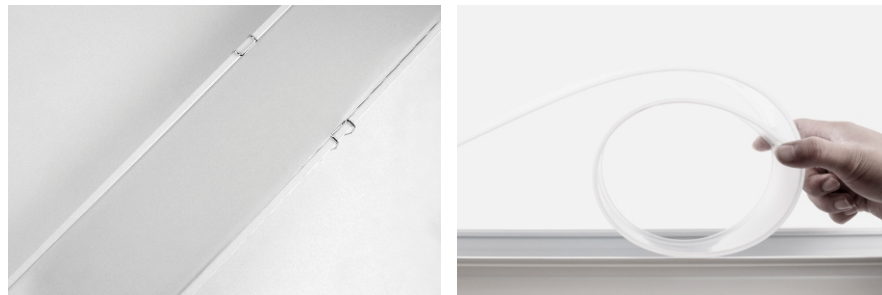
High quality LED chips have stable and uniform performance, low light attenuation, and long service life. They are made of hardware material buckles, easy to install and disassemble, with strong stability and more secure use.

Installation method:

suspension wire suspension rod square pass bridge ceiling mounted, etc varieties of installation accessories.

Splicing shape:

T-shaped, Y-shaped, X-shaped, L-shaped, hexagon-shaped, V-shaped

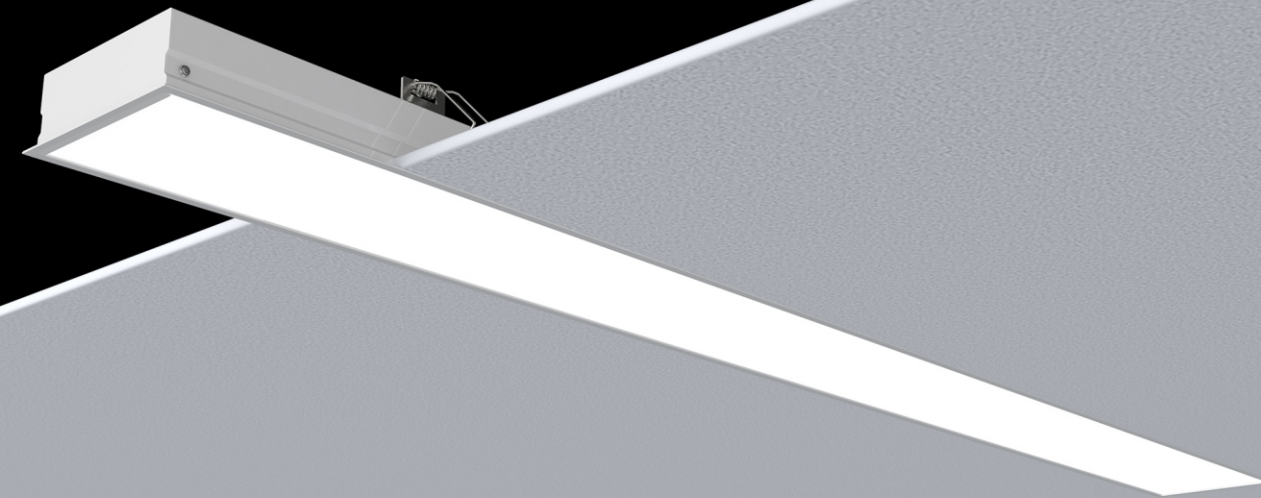


Specification	power	Dimensions	Input voltage	PF	CCT	CRI	Efficiency	Color
70width	24/30/40W	L1200*W 70 *H39	AC220-240V	0.9	3000-6500K	>90	>100lm/w±10%	Black/White
100width	24/30/40W	L1200*W100*H39	AC220-240V	0.9	3000-6500K	>90	>100lm/w±10%	Black/White
150width	24/30/40W	L1200*W150*H39	AC220-240V	0.9	3000-6500K	>90	>100lm/w±10%	Black/White

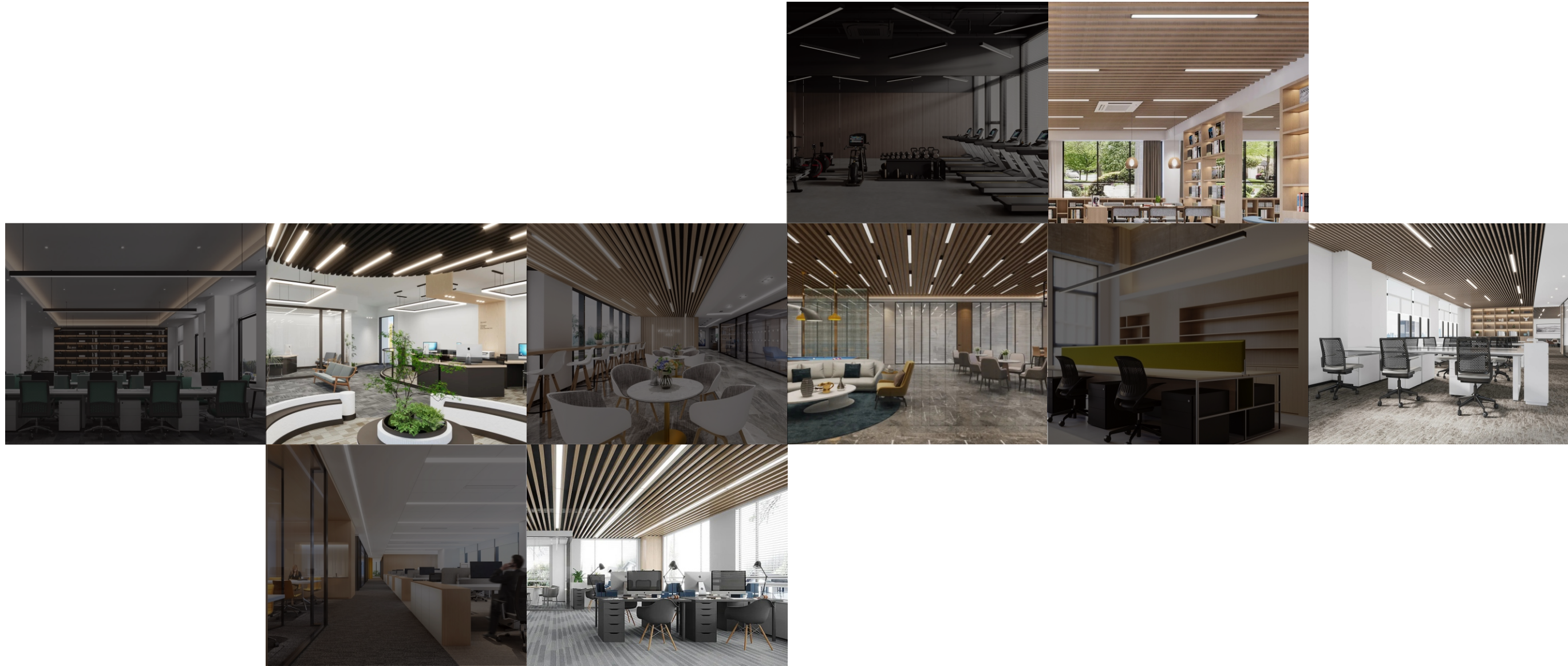
Recessed

Series linear light

Classic black and white| recessed installation,easy and convenient | rolling and forming all-in-one process



Linear light effect



Mini strip light

UNIQUE / using ultra-small 1616 led beads

Small size Mini strips comparable to COB strips, exquisite lighting performance!

The rise of small led beads

Since the advent of LEDs, LED strip lights have been exist, with the continuous upgrading of LED industry technology and update iterations. From the initial 1W led beads to 0.5W, 0.2W led beads. From large led beads 5050 to 2835, 3014, and 2216 led beads are getting smaller and smaller, and the size of the strip light is also getting smaller and smaller accordingly.

Mini strip light for refined lighting

With the continuous development of science and technology, people's demand for light is becoming more and more refined, and strip lights have been undergoing changes. Refinement lighting is popular, and mini strip lights came into being.

product description

Mini strip light is a super mini strip light made of the smallest LED bead so far and super narrow PCB board, and high-density flip-chip package with substrate.

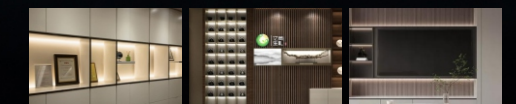
Features

Compared with traditional strip light,super small size,five sides emit light, and the light emitting surface is super large,can split light,the light efficiency is super higher,adopts new technology, with high stability and easy to repair.

The size of the LED beads is only 1.6*1.6*0.65mm, and the narrowest PCB board can be made as 4mm width.

Application Environment

It can be widely used in furniture products with small size and small grooves reserved for ambient lights.Can be widely applied to places that do not cause much damage to themselves and have high requirements for lighting.Can be widely applied to commercial premises for accent lighting or auxiliary lighting and free DIY space creation.



Epoxy process



Bare board process



Silicone technology

Polarized Light Strip

The flexible wall washing function/light source adopts direct luminescence and polarized 30 ° organic silicone integrated molding, bare board process, high brightness, and excellent linear effect!

Bare board+organic silicone integrated molding

Product Features

The flexible polarized light strip adopts internationally renowned brand company lamp beads, which have good heat dissipation. Lightweight, exquisite, flexible and flexible, easy to install, combined with specialized simple installation accessories, it can achieve wall washing effect with low cost and good effect, and the wall washing effect can reach 5-7 meters.

Specifications	Power	Dimensions	CCT	light effect	CRI	luminescence	Package
Xq100	17W	w8mm	3000K/4000k6500k	60Lm/W	> 90	30° direct luminescence	5M/roll
XQ100T24	17W	w8mm	2700K+6500k	60Lm/W	> 90	30° direct luminescence	5M/roll
Xq200	17W	W12*H12mm	3000K/4000k6500k	50Lm/W	> 90	30° direct luminescence	5M/roll
XQ200T24	17W	W12*H12mm	2700K+6500k	50Lm/W	> 90	30° direct luminescence	5M/roll

30°

Polarized light



Model: DT-XQ100C24-1001



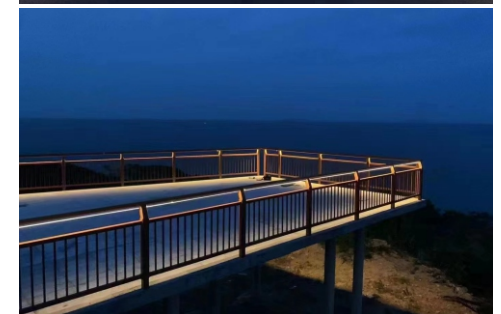
Organic silicone integrated polarized silicone light strip



Polarized dual color temperature bare plate light strip

LED special polarized light strip

Creating and change life with atmosphere Lighting



Knob control switch

Light smart | home atmosphere lighting control switch | home decoration luxurious and exquisite.

Dual output dimming color



Product advantages

ROTARY CONTROL SWITCH

It is a cost-effective dimming and brightness adjustment switch with a knob screen display and button layout, providing users with a better control experience and a lightweight and intelligent decorative effect for modern home walls.

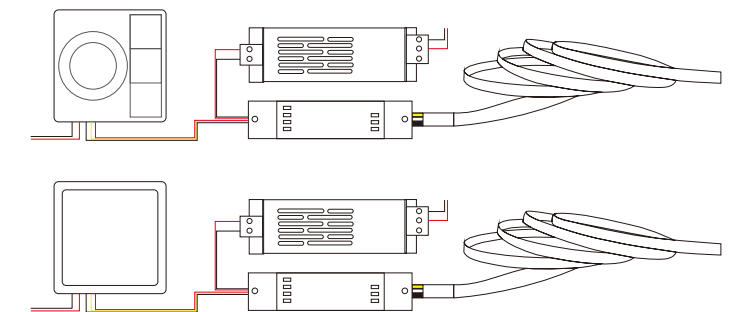
In the design concept of functional development, dual functions of dimming and color adjustment are adopted, which can simultaneously connect constant current and constant voltage lamp regulation, knob regulation+digital screen display, dual 0-10V output analog dimming signal, providing excellent visual and tactile experience

The shell is made of PC/ABS fireproof material, AC110-240V wide voltage power supply, streamlined appearance design, modern LCD digital display with buttons, and has the ability to adjust the color temperature and brightness of the lighting fixtures.

Home Intelligence Kit

Option 1: Knob switch + light strip + power supply

Option 2: Four inch screen switch + light strip + power supply



Model	Dimensions	Power input	Power supply method
XNMB0-10V	L85*W86*H58	AC110-240V50/60HZ	Neutral/Live wire

Dual 0-10V dimming and brightness adjustment/30 drives controlled by one knob/temperature 0-45 °C humidity ≤ 90% RH non condensing

Context panel

Scenario Panel Tuya



Using Tuya Bluetooth Mesh/Breaking the tradition and launching a new product, experiencing a new visual unlock with a new panel switch. Every home needs a scene panel, one click to awaken physical and mental pleasure!

SCENARIO PANELSWITCH

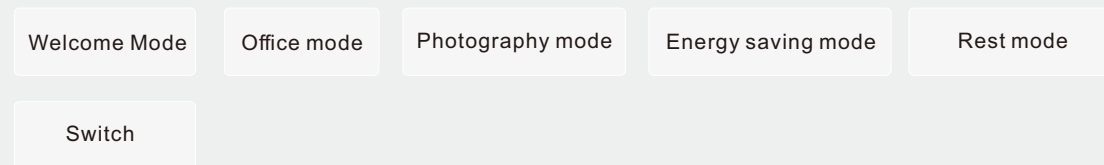
Product Features

The communication principle adopted by this product is "Graffiti Bluetooth Mesh" wireless control, with a complete set of scene mode system. It can adjust the switch with one click, and use the smart life connection panel of the mobile app to achieve mutual linkage between the phone and the panel, and control the lighting.

The appearance of the panel is designed with a dual display screen and buttons, which can display time, date, week, temperature, etc., making it convenient for daily work and life. The unique welcome interface and functions provide users with different atmosphere experiences, among which the "energy-saving" function enables the lights to automatically dim and save energy when people leave.

Scenario panels are widely used in public office writing, personal offices, meeting rooms, home and other places.

Diversified intelligent scenario mode



Diversified color customization solution

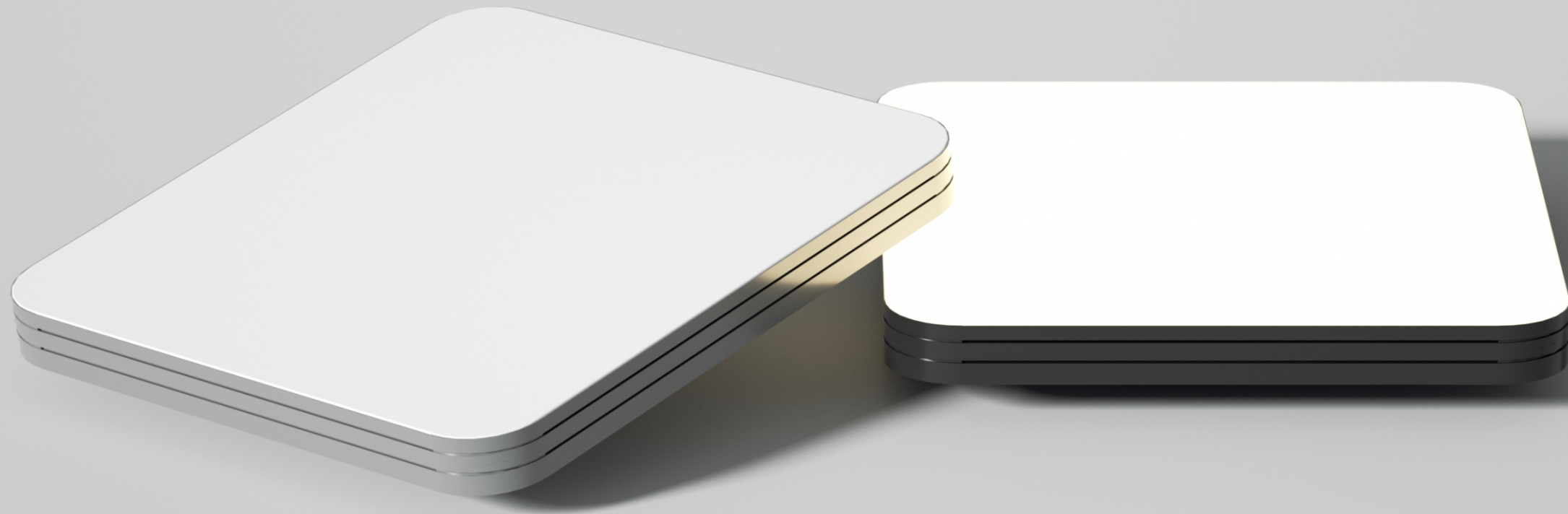


New product launch

New series of products

High performance environmental friendly materials
Creative protection design/equipped with intelligent regulation

Minimalist lighting classic black and white (customized) as the mainstream of minimalist space



Product Advantages

Installation effect

Soft film ceiling

This series of products adopts green and environmental friendly high-performance materials, which are resistant to aging, do not deform or change color, easy to install. The kit and finished product can be sold separately, with modular design and good overall sealing performance. The supporting intelligent control can achieve free regulation in the light environment

Applicable fields

It can be widely used in commercial fields related to lighting in subway areas, shopping malls, schools, hospitals, supermarkets, factories, office spaces, etc.

Basic parameters

Product power: 36W
Input voltage: AC220-240V
Installation method: ceiling mounted

Dimensions	CCT	Dimming CCT and brightness adjustment	Luminous flux
L600 *W300*H80	3000-6500K (single color)	not dimmable	—
L1000*W900*H80	2700-6500K (dual color)	0-10V dimming power supply+knob switch	6000±10%



制做工艺要求



工艺参照样图

【类型】：翻页册子形式

【纸张】：封面采用特种纸张(250G珠光纸)覆哑膜

【工艺】：封面字体图形局部UV工艺(工艺成本允许条件下)

【装订】：采用胶装形式

【页数】：22页 44P

【尺寸】：420X285mm 单面尺寸:210X285mm(印刷各边预留3MM出血位切边)



照明灯具系列产品

静谧柔光 / 铸造经典光艺

照明系列之三 | 海外市场
深圳市绿色半导体照明有限公司

公司社交账户

- Facebook: Light Green
- LinkedIn: Light Green International Co., Ltd
- Youtube: LightGreen-01
- Instagram: lightgreenled
- TikTok: lightgreen_jed2

业务员邮箱

cicilee@light-green.cn WhatsApp: +0086 13392892737
 sophie.zhang@light-green.cn WhatsApp: +0086 15946744020

LIGHT GREEN

Specializing in the production of lighting fixtures
through manufacturing

Highlighting Products
Every sparkle deserves to be seen

Innovative
Unique aesthetic lines and artisanal details
Locking in every inch of light

Product Lineup No. 3 | Overseas Markets