

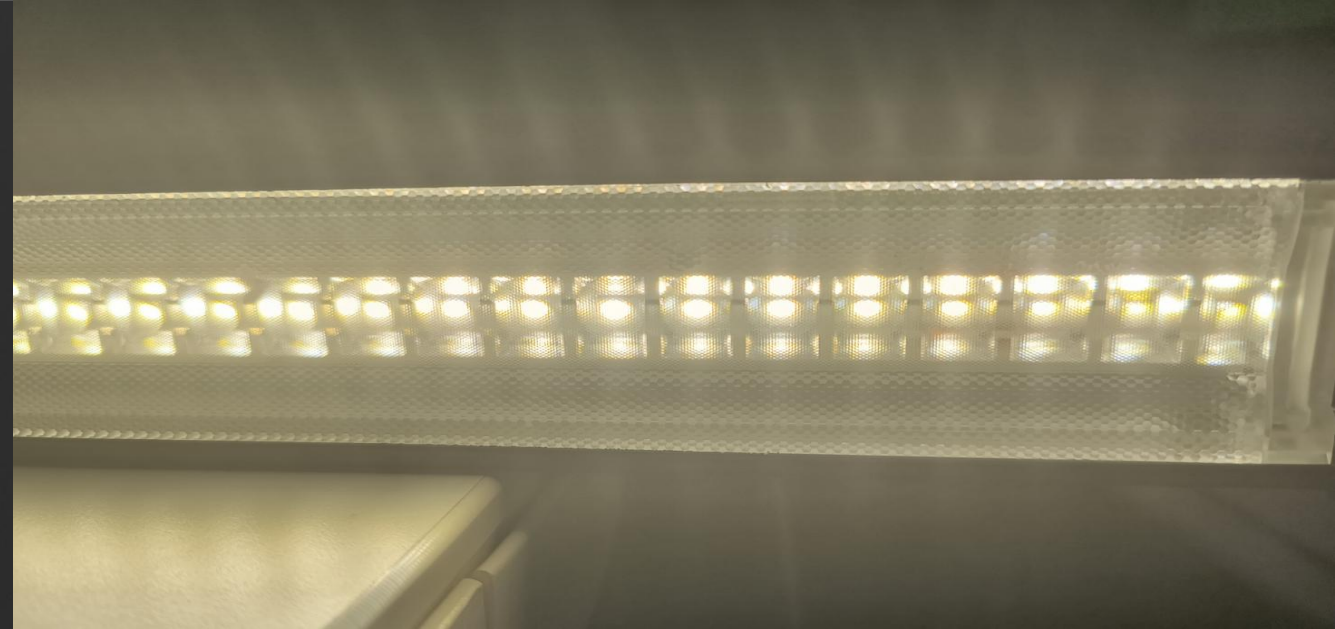
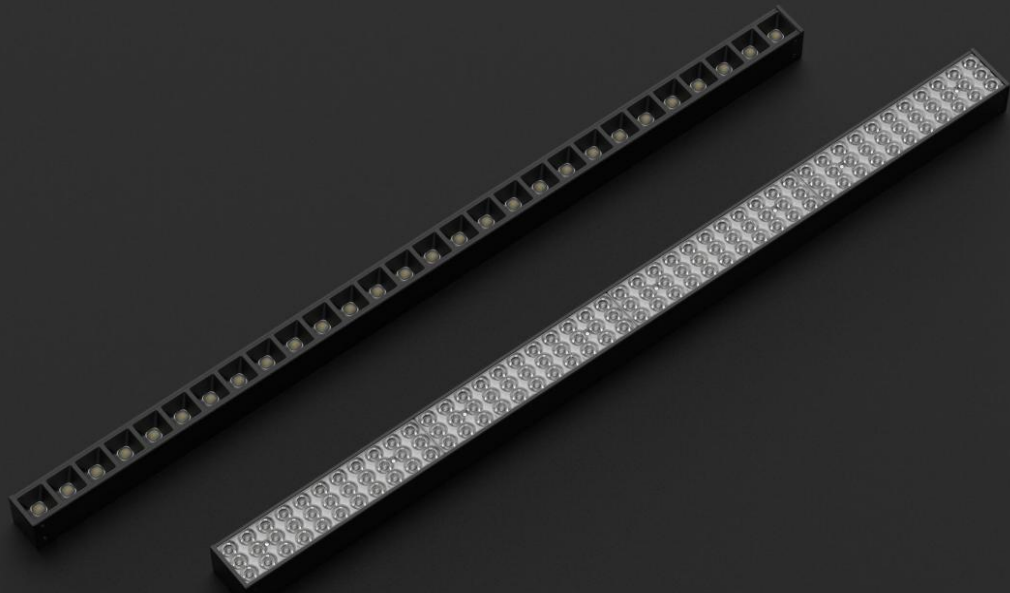
50/70 Linear Lights



Multi optics

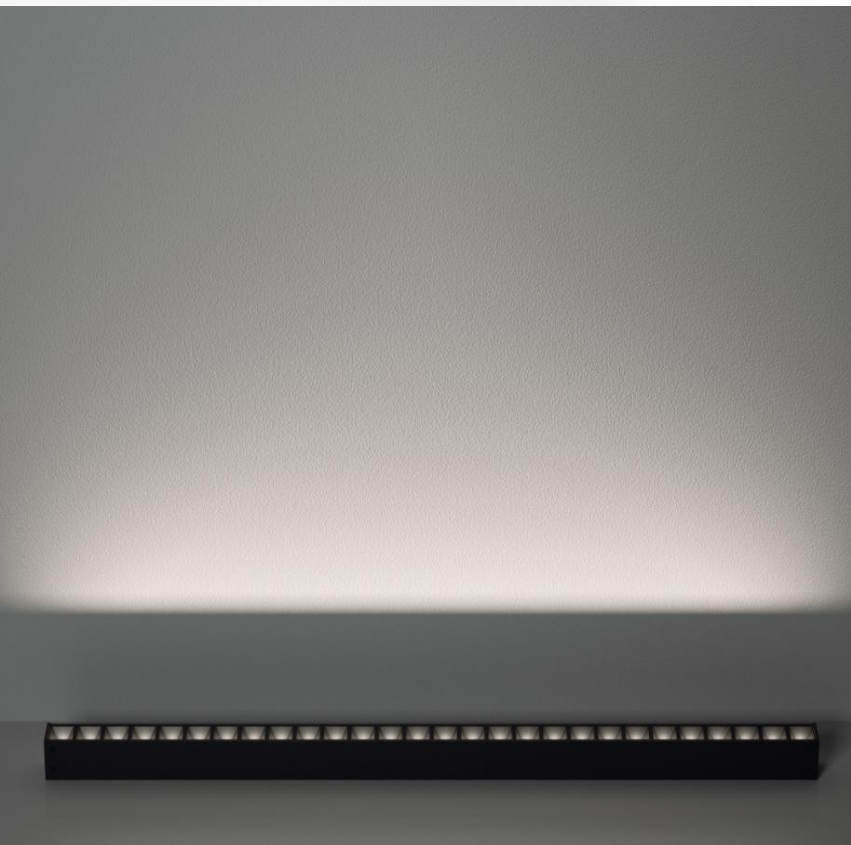
Seamless splicing

Perfect instead of Alumium

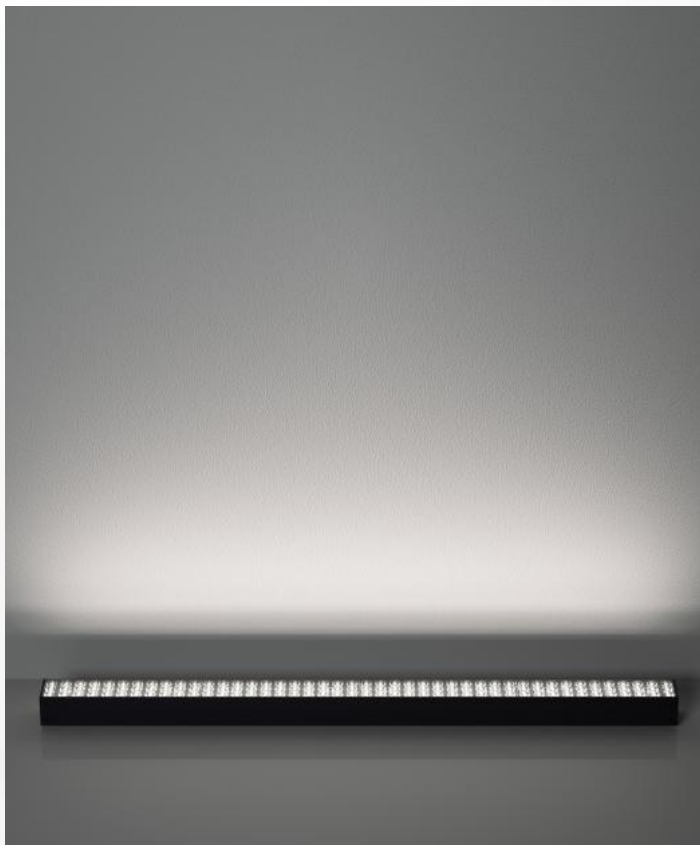


Optics

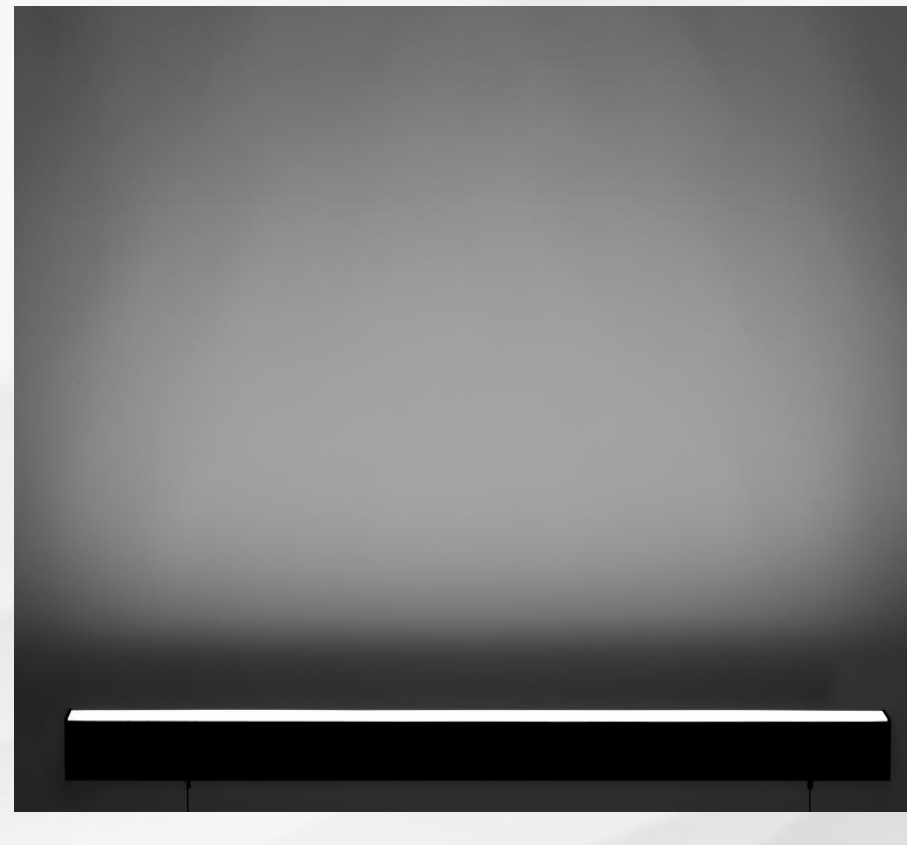
Riflector 60/80°



LENS with 30/60/90°



PC

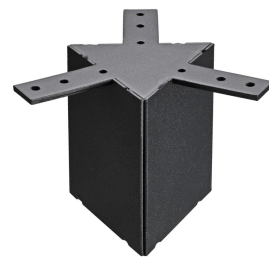


Shape Connectors

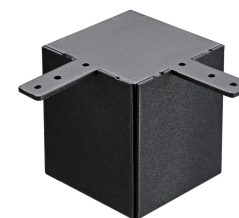
2*120°



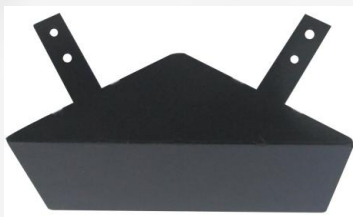
3*120°



2*90°



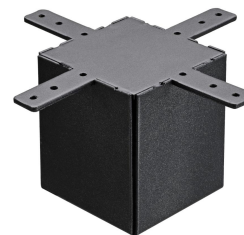
2*60°



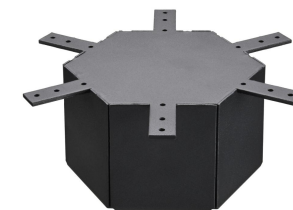
3*90°



4*90°



6*60°

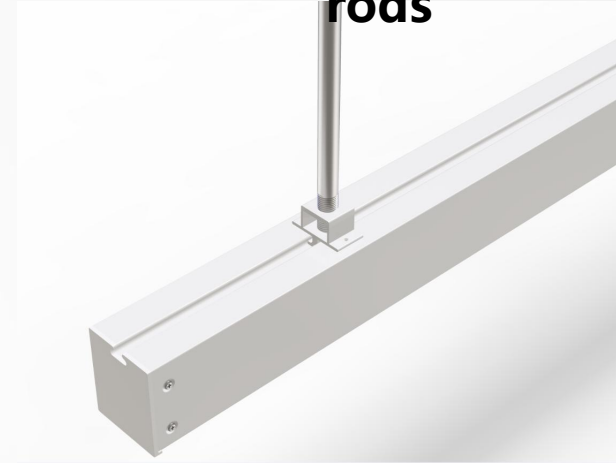


Accessories

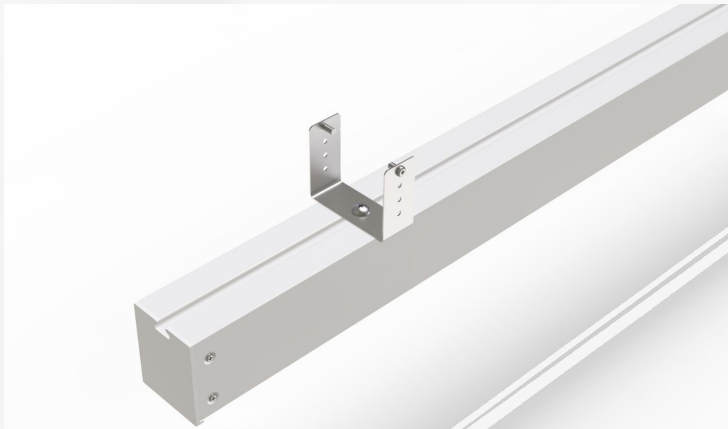
Suspension
wires



Suspension
rods



Square
Pass



Surface
mounted



Bridge



Specification 产品信息

尺寸/Size	50 /Width	70 /Width	备注
功率 power	40W	40W	0 - 10V, Dali, Zigbee, bluetooth, wifi, Radar sensor dimnable
电压 voltage	AC220 -240V	AC220 -240V	
PF值 PF value	0.9	0.9	
色温 CCT	3000 - 6500K 2700 - 6500K Tunnable CCT	3000 - 6500K 2700 - 6500K Tunnable CCT	
显指 CRI	80/90	80/90	
光效 efficiency	80lm/w;100lm/w;130lm/w	90lm/w;100lm/w;130lm/w	
防护等级 IP	IP20	IP20	
颜色 color	standard :matt black/white	standard :matt black/white	
尺寸 size	1145* 50*60mm	1150*70*60mm	
防眩UG RAnti-glare	—	≤16	
发光角度 Luminous angle	60/80/ PC120°	30 °、 60 °、 90 °、 PC120°	
出光方式 Light output method	下出光 Down light	下出光 Down light	
光学部件 Opticalaccesseries	反光杯 +透镜 +PC扩散罩 Reflector+lens+PC diffuser	透镜 +PC扩散罩 Lens+PC diffuser	
外箱尺寸 ctn size	1205*435* 190mm	1205*435*230mm	
装箱数量 qty/ctn	10PCS/ctn	10pcs/ctn	
单支净重 NW	1.05kg	1.25kg	
整箱毛重 GW	12.5 kg	14.5 kg	

Application

Gym, hospital, office, fit room, showroom, supermarket....

