

Company introduction

深圳市绿色半导体照明有限公司
LightGreen International Co.,Ltd

<http://www.light-green.cn>



CONTENS

01

公司基本介绍

Basic introduction of
the company

02

公司主营产品

Company's main products

03

企业荣誉资质

Enterprise honor and
qualification

04

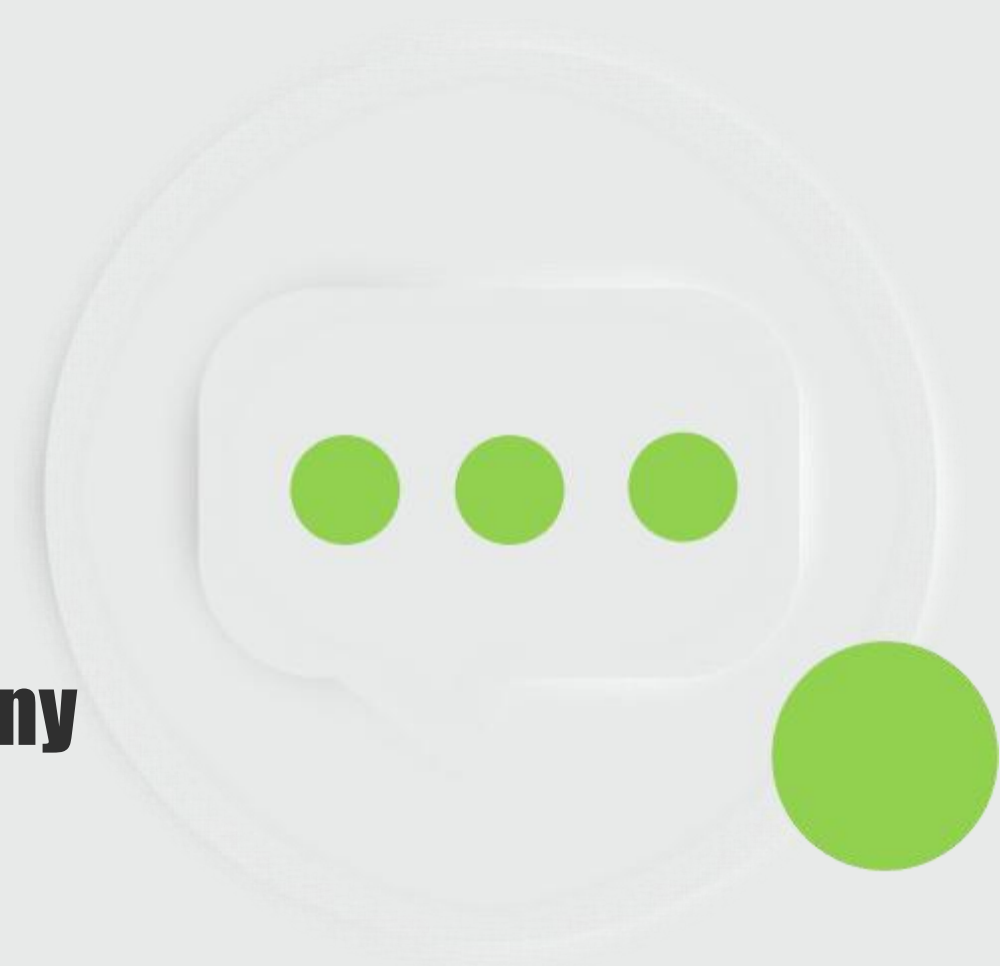
公司合作客户

Company cooperation
customers

01

公司基本介绍

Basic introduction of the company



Light Green International Co.,Ltd was established in **2007**, head office is located in Skyworth Innovation Valley SHENZHEN, mainly engaged in the research and development of **commercial lighting, office lighting and intelligent lighting products** integrated with various control system. Our company has been rated as "National High-tech Enterprise" in 2011.

The subsidiary "Light Green International Co., Ltd. (Zhongshan Branch)" was officially established in **Zhongshan City in 2021** . with an industrial base of more than **8,000 square meters**. We have established the new auto production lines and machines to provide faster response to our clients in production, sampling and R&D. We have 16 rolling forming machines to **promise low MOQ** and **short lead time** to our clients. Besides forming machine, we have own cutting, welding, wire stripping, injection molding, glueing, reflow soldering process, etc.

The full indoor production range ensure our products with stable quality and excellent cost management.

With **17years lighting experience**, we make various product ranges and base on them, we enforce our capability in customizing products for our clients.

Our company is certified with **ISO9001** and our products are all certified to be in accordance with the standard for each market.



十万套出口 100,000 sets

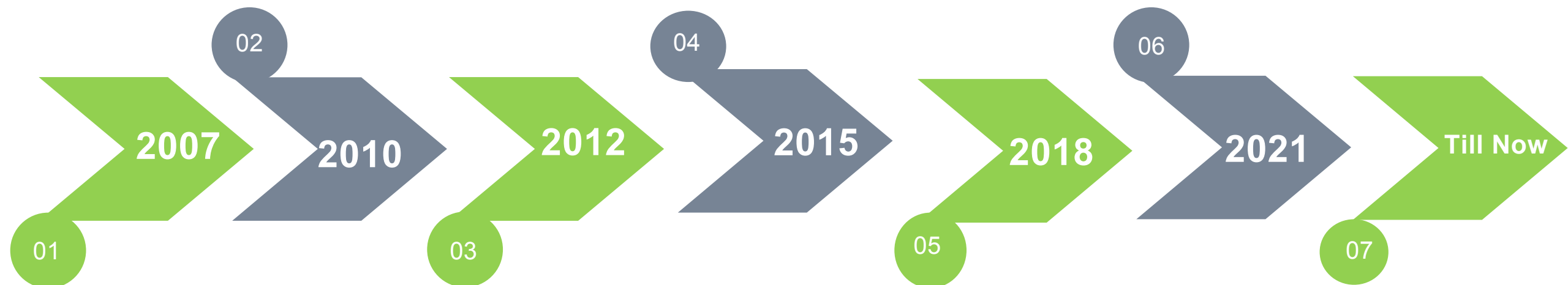
In 2010, increased capital to 20 million RMB, annual export for side-lighting series exceeded 100,000, keep TOP 1 ranking of LED panel light export.

线条灯 Linear Light

In 2015 the same year to China's smart city in-depth research, the company invested in large assets of intelligent production equipment to lead the new trend of commercial lighting

扩大规模 Scaling up

The company was officially established in Zhongshan City at the end of 2021. Shenzhen company is mainly engaged in intelligent product development and Internet platform development.



公司成立 Company established

Light Green officially established in 2007

发明专利 Patents for inventions

In 2012, we entered into cooperation with the Broadband Semiconductor Research Center of Peking University and obtained the patent of product invention.

智能生产 Smart Production

In 2018, the company used millions of investment to build the pioneering automatic molding line in the lighting industry

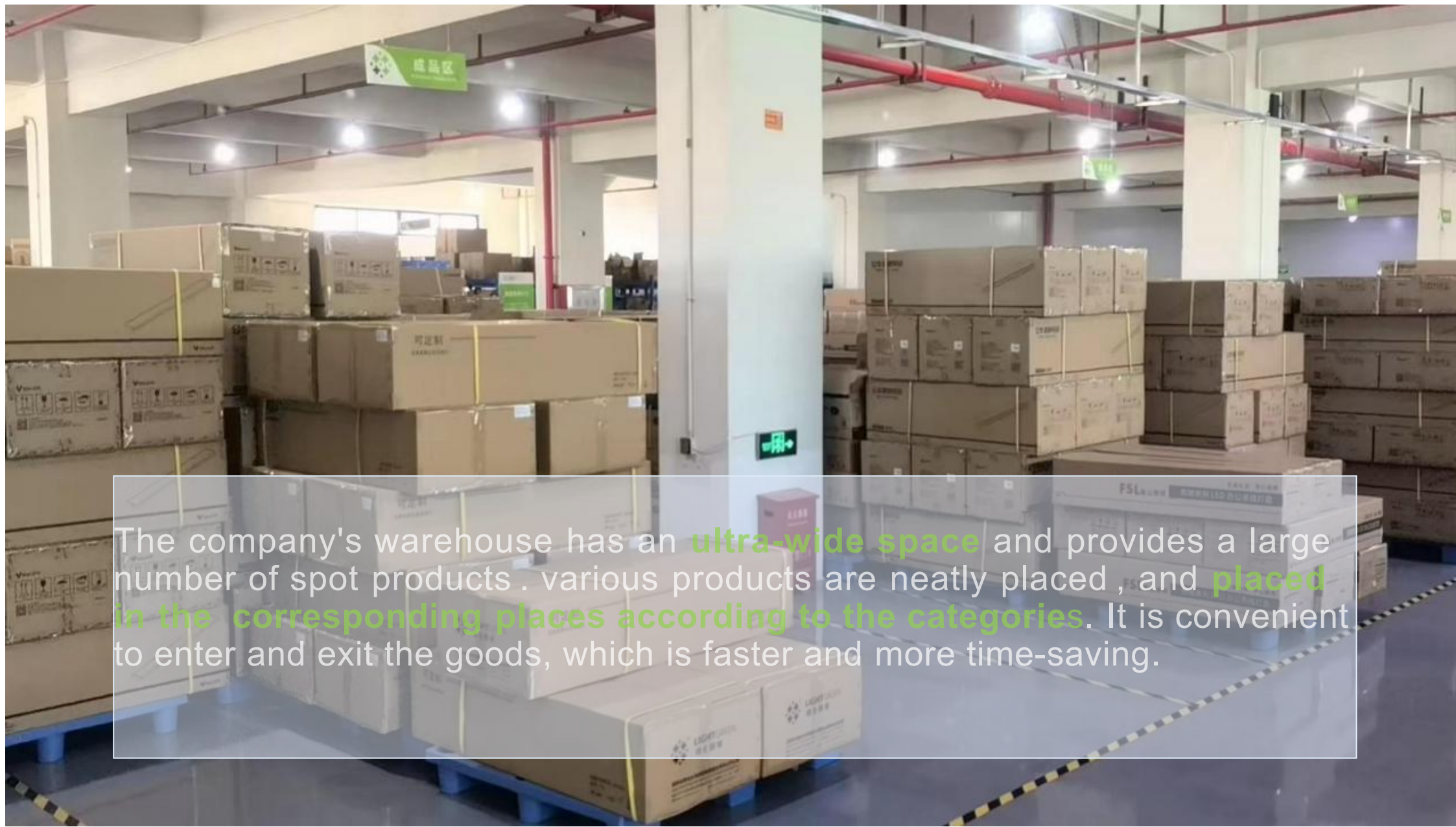
In the production scale operation ,the company has invested in **intelligent production lines** , creating the first precedent in the lighting industry with millions-level of cold-formed forming equipment, and introduced **16 advanced automatic** forming and rolling integrated machines , from the steel body to the lamp body.

New materials which is friendly to the environment, no need for secondary coating, strong scale. It can meet the high requirements of the market for customization of lamps and batten linear lights, as well as the output ratio of production efficiency, which has a great help and improves the delivery rate of customers.





Light Green production workshop has standard and tidy production procedures and environment, completes customer orders with high efficiency. The company adopts million-level automatic production line equipment, specializing in the production of lighting fixtures, can provide customization lighting services quickly, achieving varieties of lighting fields contains office and commercial culture industries, meeting the needs of customers in many aspects, summarize the advantages in four aspects: **"automatic production"**, **"customized service"**, **"personalized lighting"** and **"rapid response"**



The company's warehouse has an **ultra-wide space** and provides a large number of spot products. Various products are neatly placed, and **placed in the corresponding places according to the categories**. It is convenient to enter and exit the goods, which is faster and more time-saving.

temperature test machine, led bead color contrast test machine, voltage test machine, grounding resistance test machine, withstand voltage test machine, etc...



【积分球】

Spectrum Test Machine



【高温烤箱】

High Temperture Oven



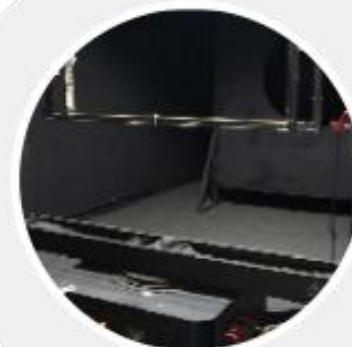
【恒温湿检测】

Constant temperature and humidity
detection



【功率测试仪】

Power test machine



【IES测试仪】

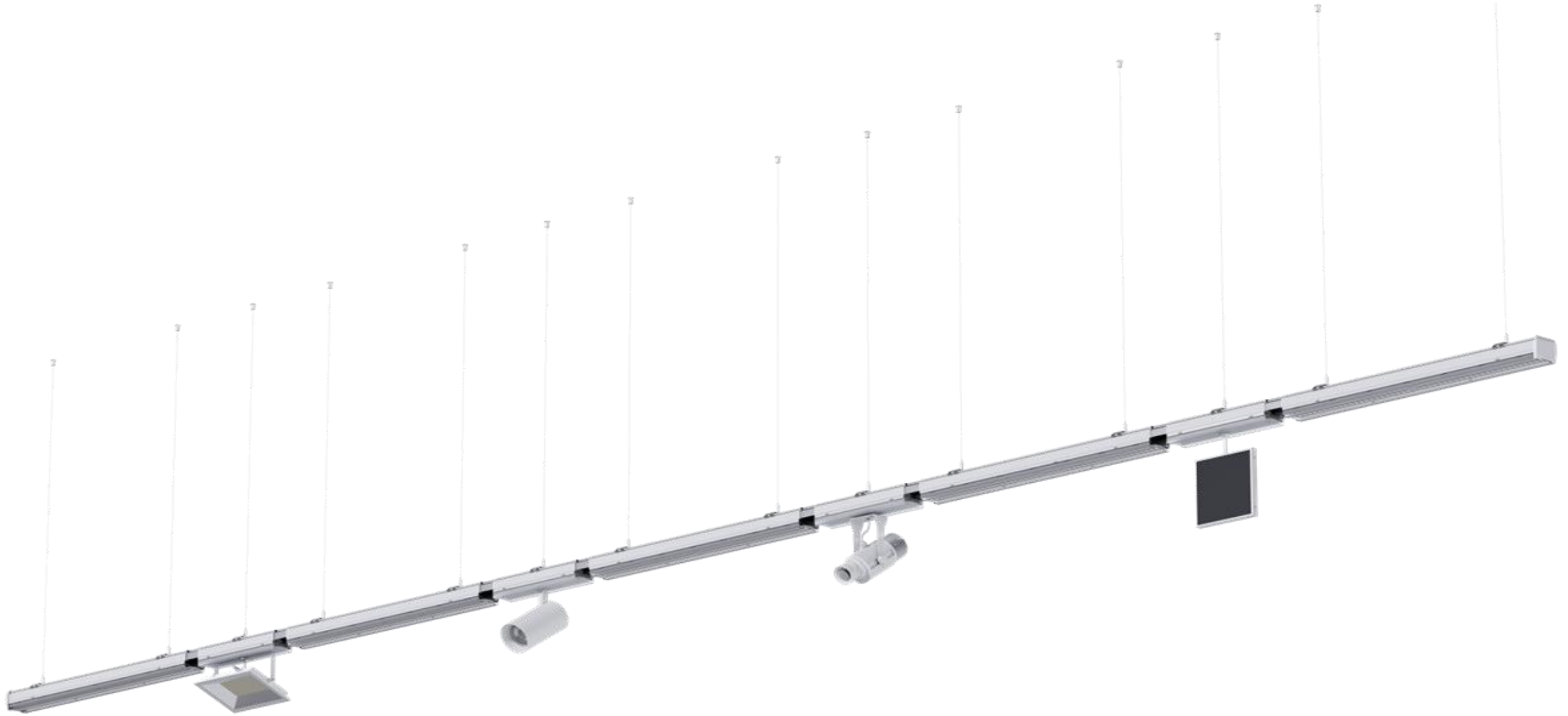
IES test machine

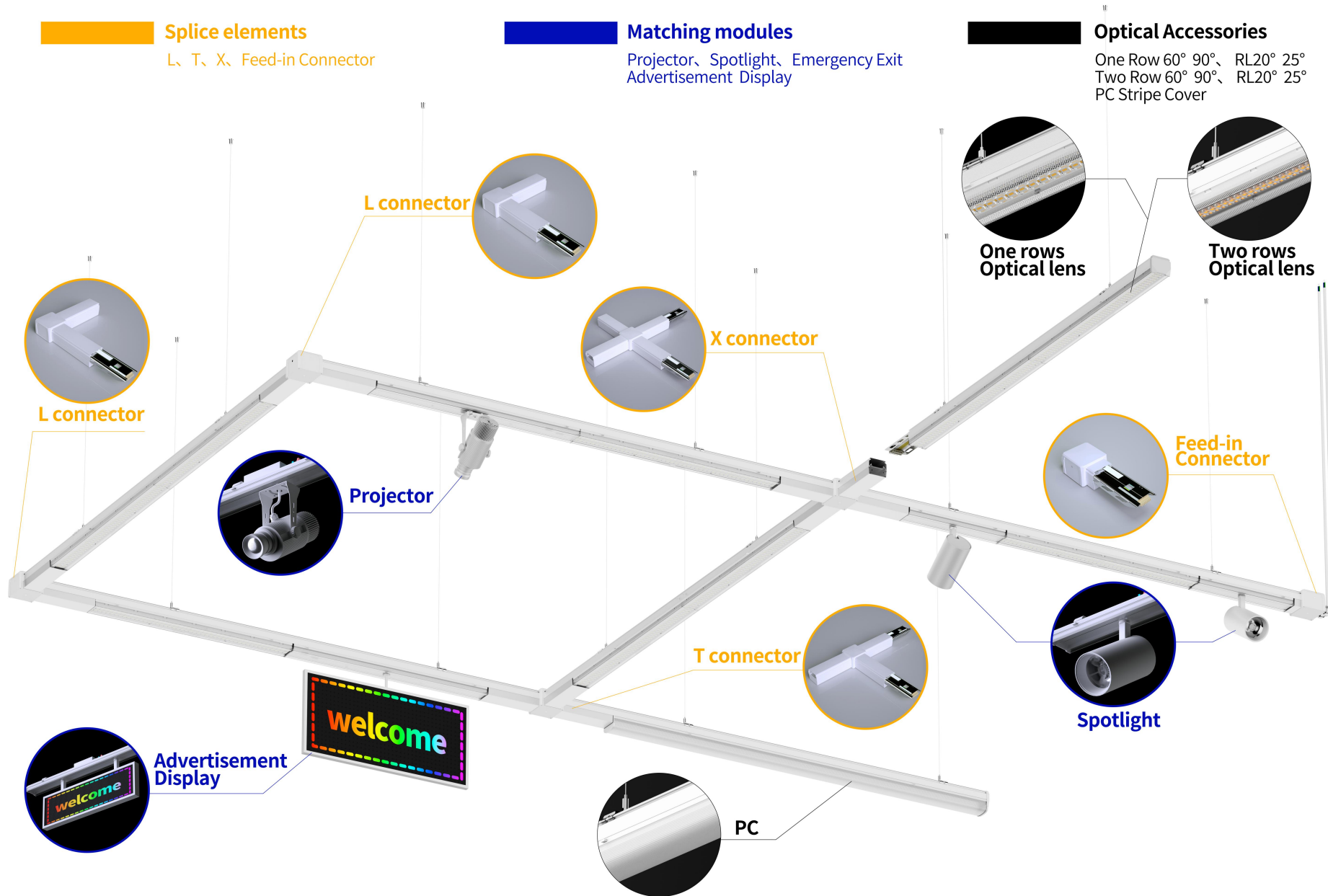
The slide features a clean, modern design with a light gray background. A large, faint, embossed-style graphic of a circular lighting fixture with three internal elements is centered on the right side. Several solid green circles of varying sizes are scattered across the page: a small one in the top left, a medium one at the top center, and a large one in the bottom right. The text is presented in a clear, sans-serif font.

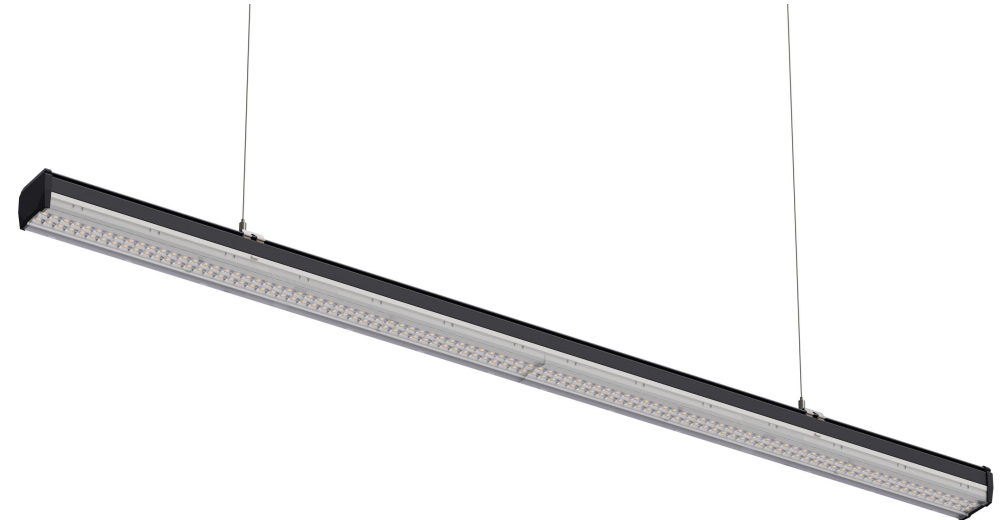
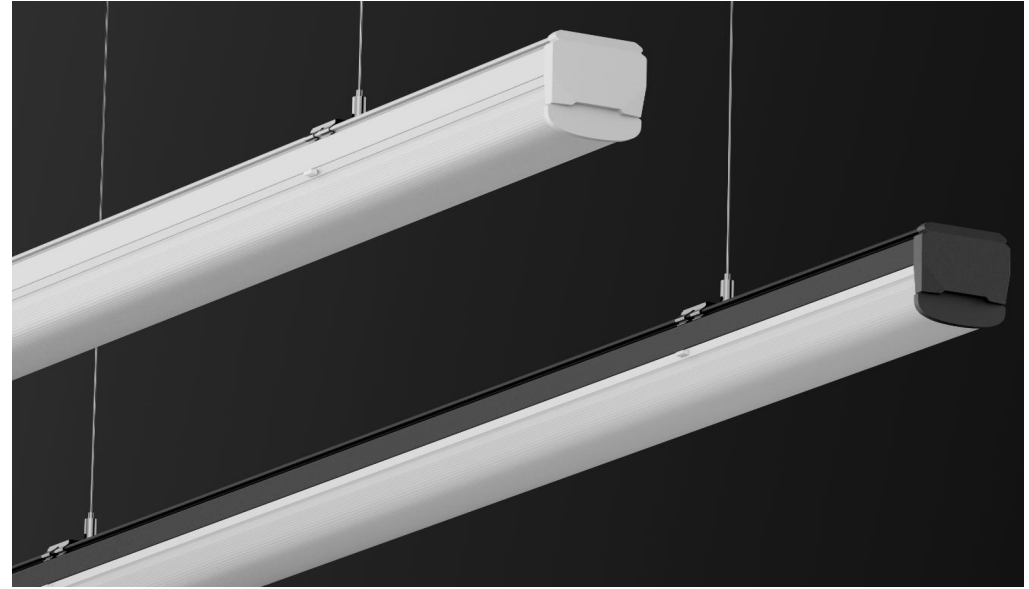
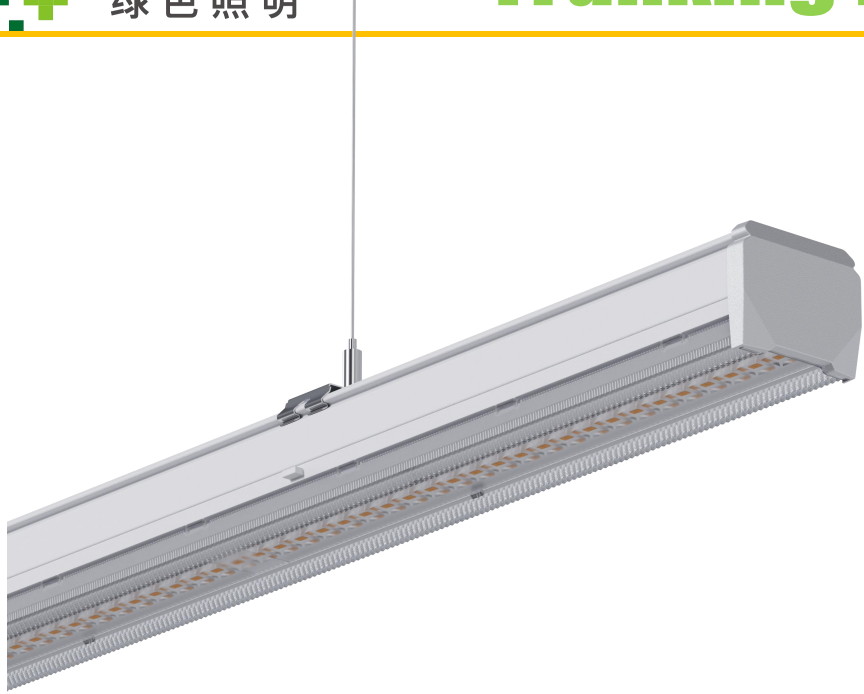
2.1

公司主营产品 | 线槽系统线条灯

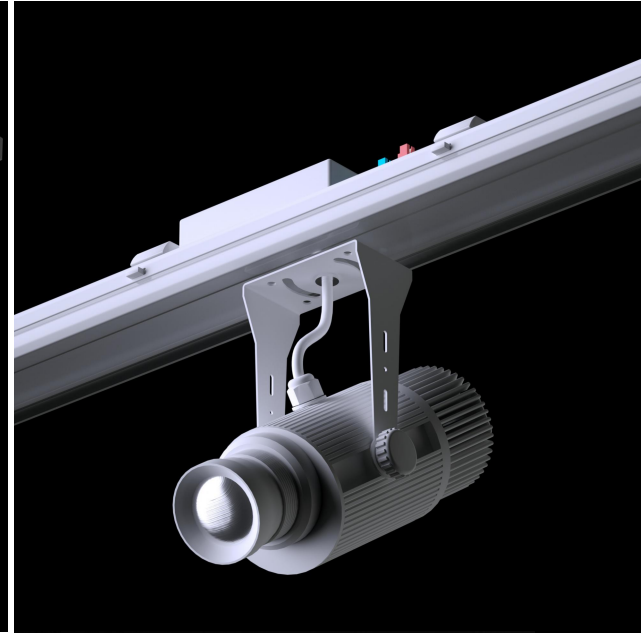
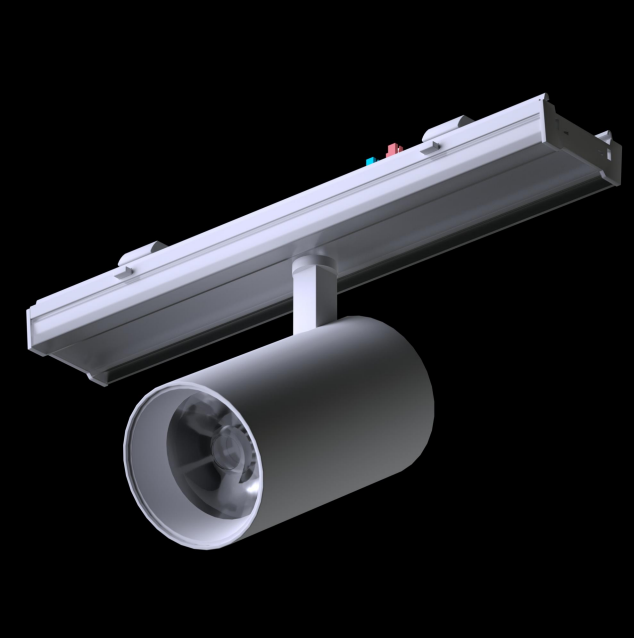
Company's main products / Trunking Lighting System



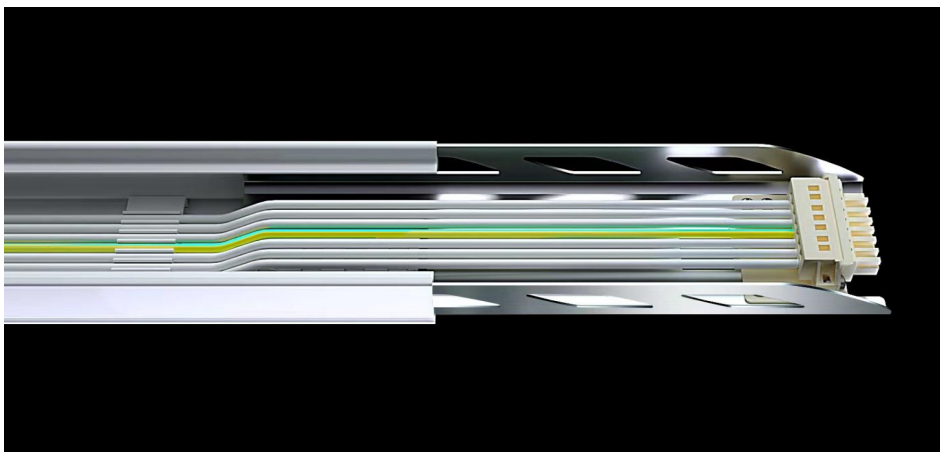




Trunking Lighting System-Lighting Moduels



Trunking Lighting System-Details



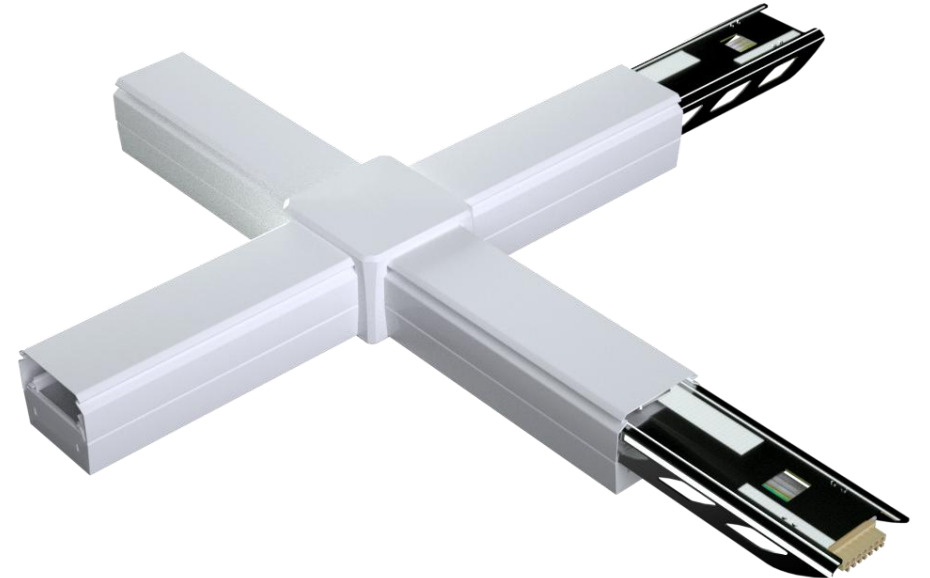
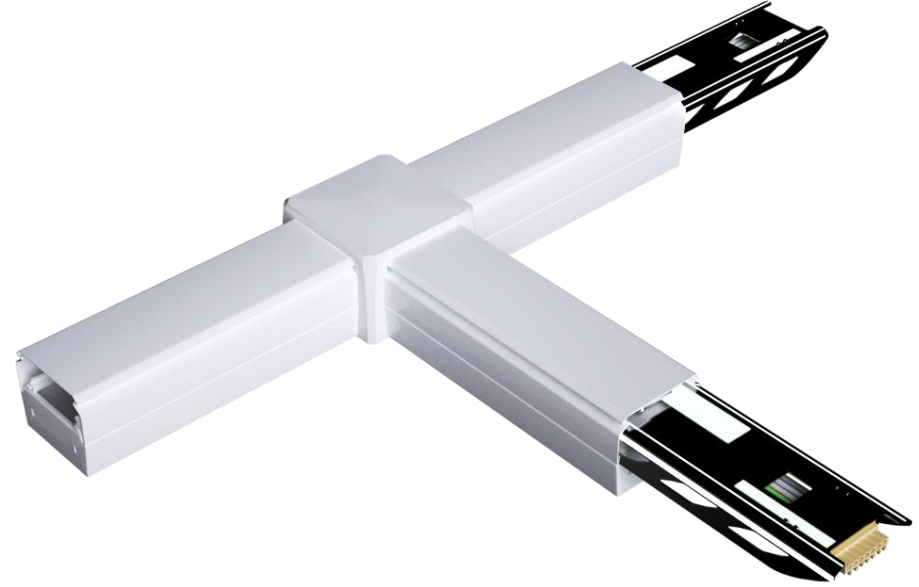
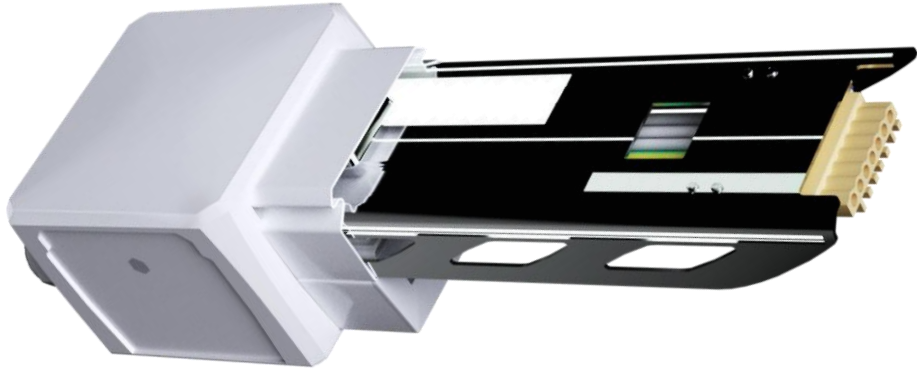
Trunking Lighting System-Fast Splicing



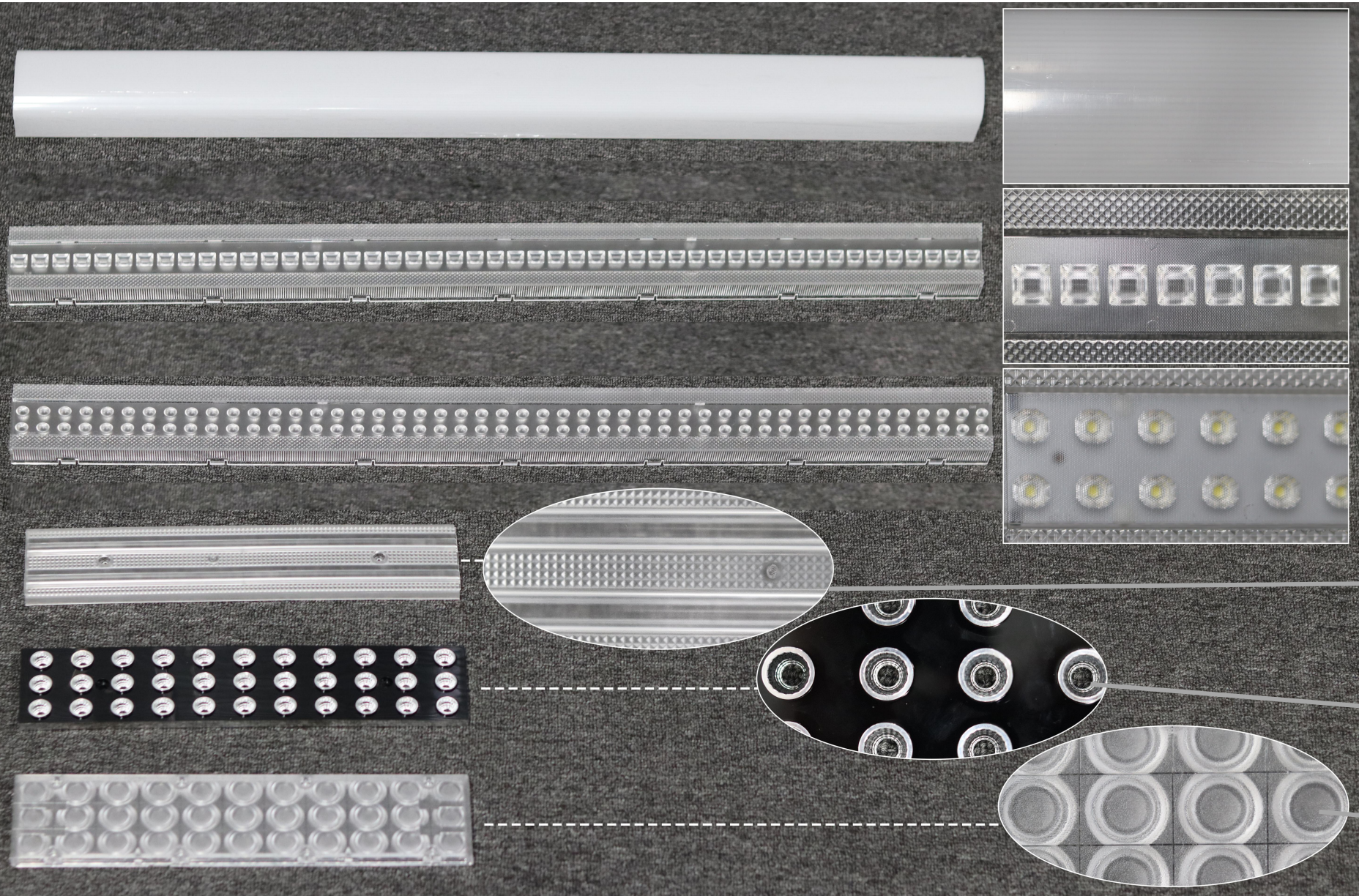


LIGHTGREEN
绿色照明

Trunking Lighting System-Connectors



Trunking Lighting System-Optics



PC 750/1500mm
120°

746*66mm 1 Line Lens
60° ; 90°
Single Asymmetric 20°
Double Asymmetric 25°

746*66mm 2 Lines Lens
60° ; 90°
Single Asymmetric 20°
Double Asymmetric 25°

285*61mm
Single Asymmetric 18°
Double Asymmetric 40°
30*90°; 60*110°;
90*110° 120*120°

286*61mm
70°

285*61mm
30° ; 60° ; 90°

Standard Specifications

尺寸/Size	1500*67*57MM		Notes
功率 power	60W		Smart Solution Dali, 0-10V Radar Sensor Zigbee, bluetooth wifi, dimmable
电压 voltage	AC220 -240V		
PF值 PF value	0.9		
色温 CCT	3000/4000/5700/6500K		
显指 CRI	80/90		
光效 efficiency	PC:130lm/w LENS:160lm/w; 180lm/w;200lm/w		
防护等级 IP	IP20		
颜色 color	matt black/white		
光学部件 Optical accessories	PC/ One line LENS/ Two lines LENS/ Three Lines LENS		
模组适配 Modules Match	Spotlight, projector, display screen, Emergency Sign, Sensors, Pendant Light, Blank cover		
外箱尺寸 ctn size	Trunking rail:	1205*413*210mm	
	Trunking Luminaires:	1205*413*210mm	
装箱数量 qty/ctn	10PCS/ctn		
单支净重 NW	Trunking rail:	1.55kg	
	Trunking Luminaires:	1.35kg	
整箱毛重 GW	Trunking rail:	17.5kg	
	Trunking Luminaires:	15.5kg	





LIGHTGREEN
绿色照明

Application of Trunking Lighting System

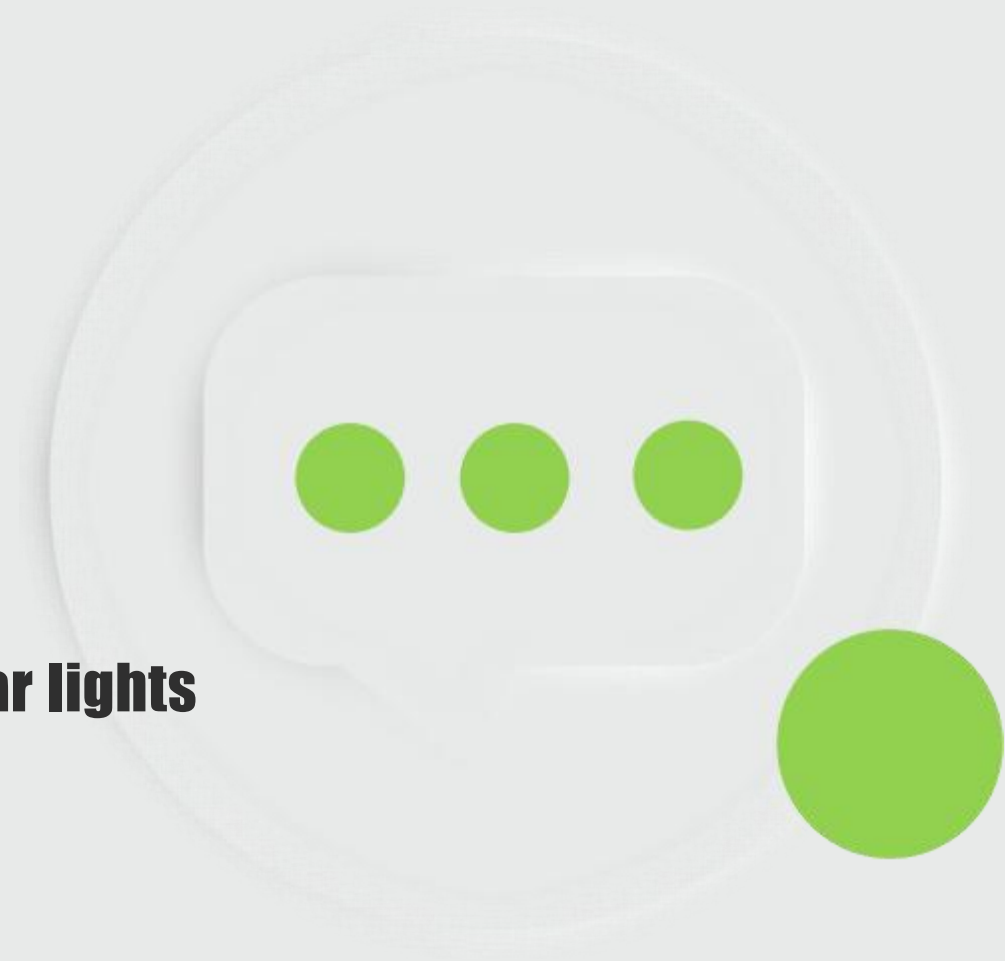




2.2

公司主营产品 | F700 &50/70 系列线条灯

company's main products / F700 series linear lights



PC

PS

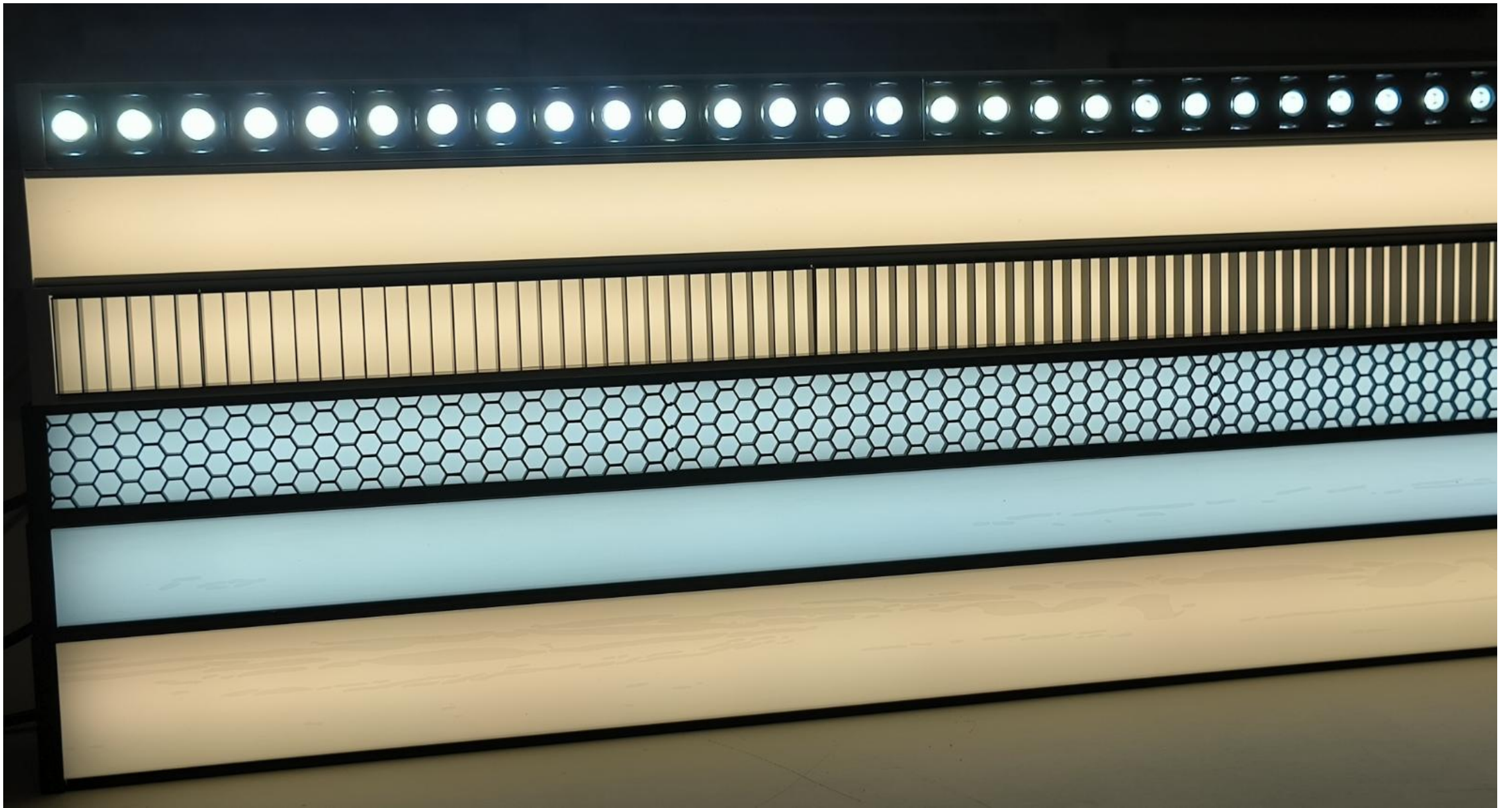
Prismatic

Honeycomb

Grill

Anti-glare



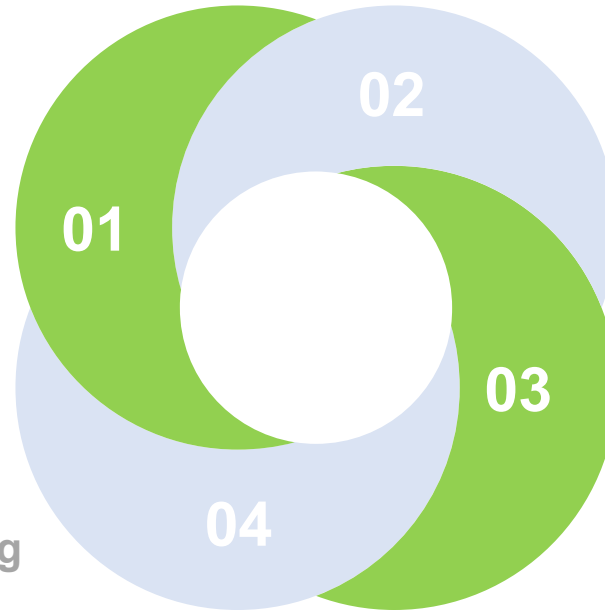


款式新颖 New style

6063 1.0mm Aluminum
Perfect Heat Dissipation
Private Model

上下出光 up and down lighting

100% down lighting
30%+70% up+ down lighting



光学配件 Optical Accessories

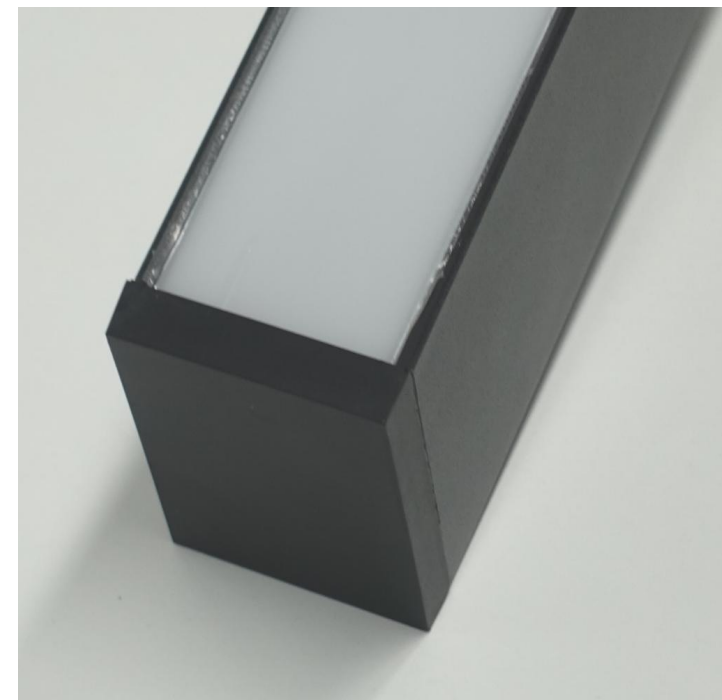
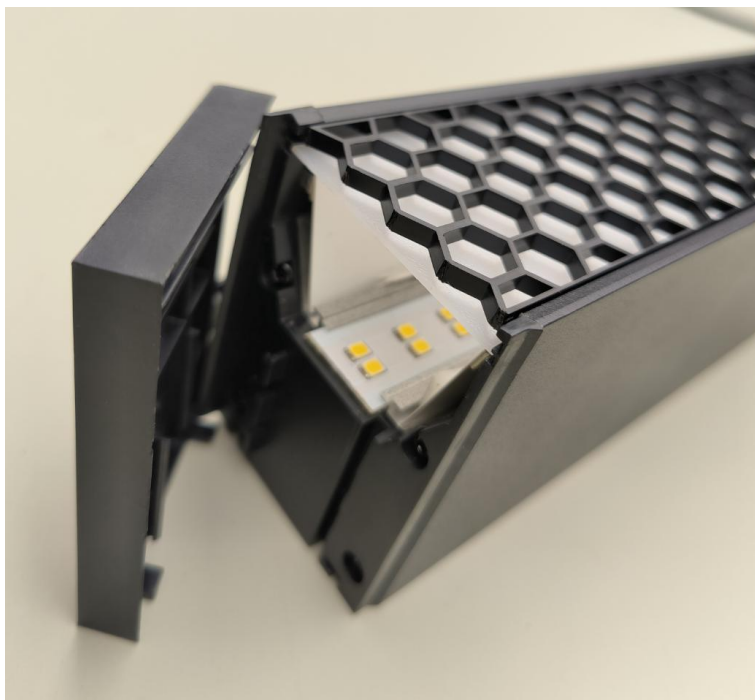
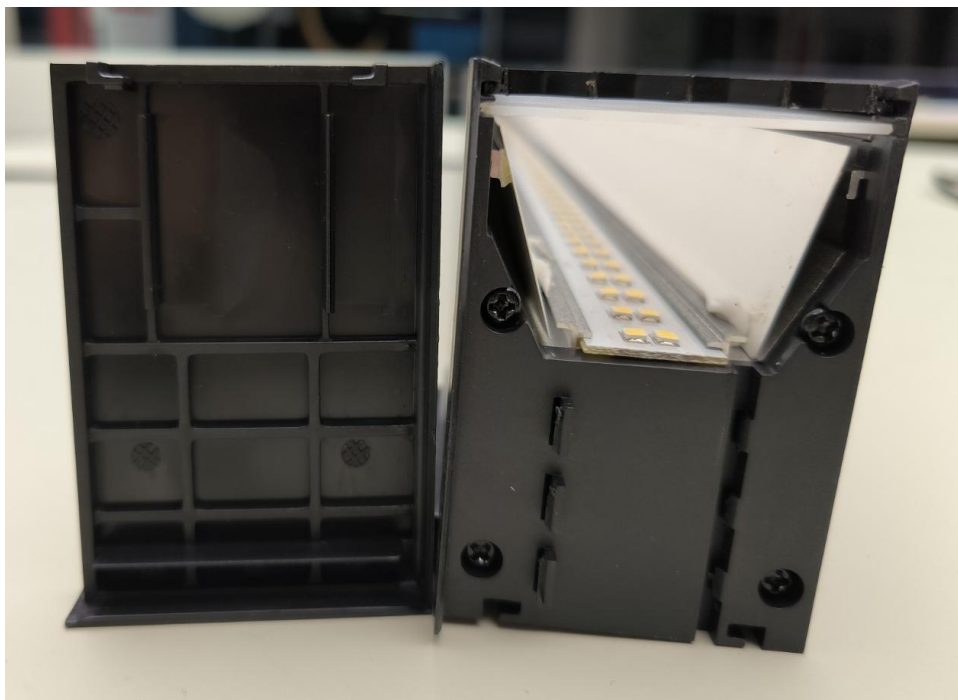
110-120° : PC, PS, PS+ Microprismatic
80° : Grille, honeycomb anti-glare

无螺丝端盖 No Screw end caps

Perfect Performance
No screws on the body
Fast connection

Main Products for fast splicing without screws on body

Two sizes: Width 50/70mm Hight: 72mm



尺寸/Size	35mm/Width	50/70mm Width	50/70mm Width	备注Notes
功率 power	40W	40W	40W	Smart Solution Dali, 0-10V Radar Sensor Zigbee, bluetooth wifi, dimnable
电压 voltage	AC220 -240V	AC220 -240V	AC220 -240V	
PF值 PF value	0.9	0.9	0.9	
色温 CCT	3000/4000/5700/6500K	3000/4000/5700/6500K	3000/4000/5700/6500K	
显指 CRI	80/90	80/90	80/90	
光效 efficiency	95lm/w	100lm/w	70lm/w;50lm/w	
防护等级 IP	IP20	IP20	IP20	
颜色 color	matte black/white	matte black/white	matte black/white	
尺寸 size	1200*35*72mm	1200*50/70*72mm	1200*50/70*72mm	
光学部件 Optical accesseries	Reflector 15° 24°36°45°	PC+PS+Prismatic 110°	PS+ honeycomb;PS+Grill 80°	
外箱尺寸 ctn size	1270*300*235mm	1270*380*235mm	1270*470*235mm	
装箱数量 qty/ctn	10pcs/ctn	10pcs/ctn	10pcs/ctn	
单支净重 NW	1.35kg	1.65kg	1.95kg	
整箱毛重 GW	13.8kg	16.8 kg	21.5 kg	

Shapes Connectors



L-shaped



T-shaped



X-shaped

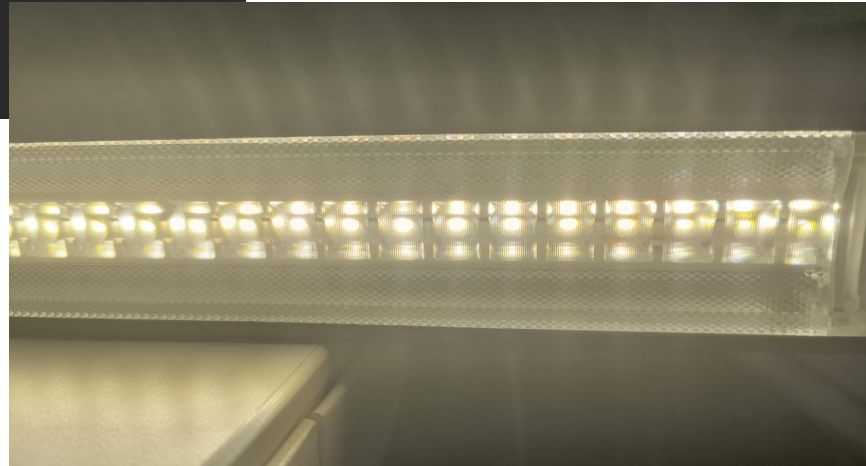
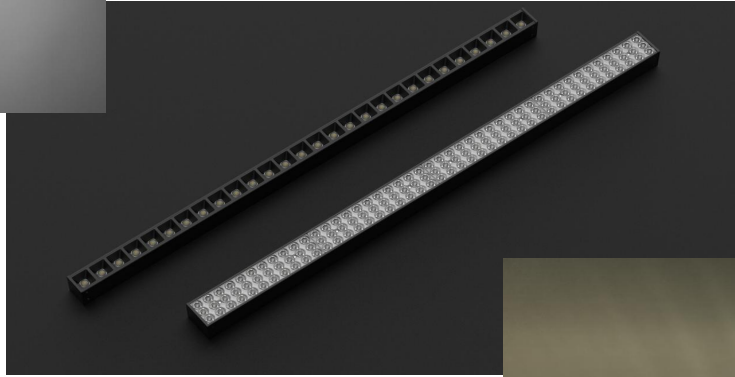


2.3

公司主营产品 | 50/70系列线条灯

Company's main products /50/70 Linear light





Core Features

款式新颖
New style

The whole light is small and exquisite. Exquisite workmanship, are built for innovation.

配件齐全
Complete accessories

Hanging wire, boom, ceiling, square pass, bridge installation method

性价比高
Cost-effective

More cost-effective compared to aluminum pendant wire lights and bent iron lights

百变造型
Variety of looks

Support One-way, V-way, L-way, T-way, X-way splicing solutions

交货迅速
Fast delivery

7 days delivery for orders, 10-12 days delivery for customized products.

彩涂板环保材
New environmental protection materials

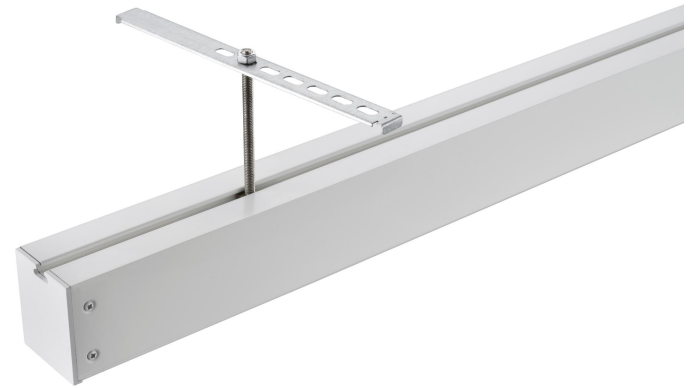
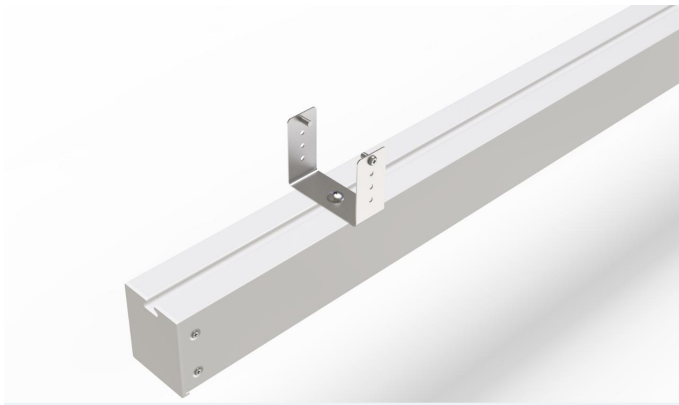
The use of new environmentally friendly materials
color coated plate lamp body, cost-effective

防眩透镜设计
Anti-glare lens design

Anti-glare reflector + lens, using the principle of secondary light distribution

多角度光源照明
Multi-angle light source lighting

30°, 60°, 90°, 120°
Single Asymmetric 25°
Double Asymmetric 25°

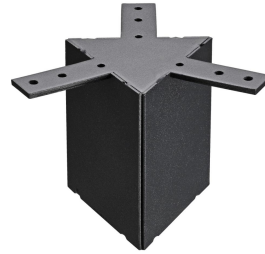


Shapes Connectors

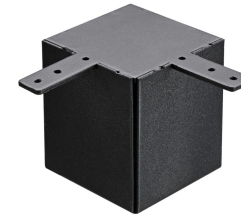
2*120°



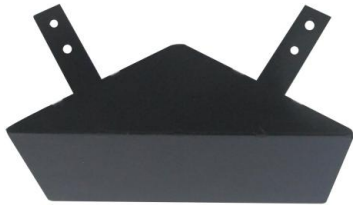
3*120°



2*90°



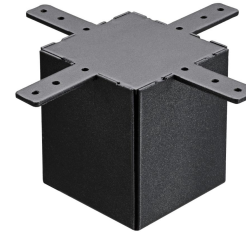
2*60°



3*90°



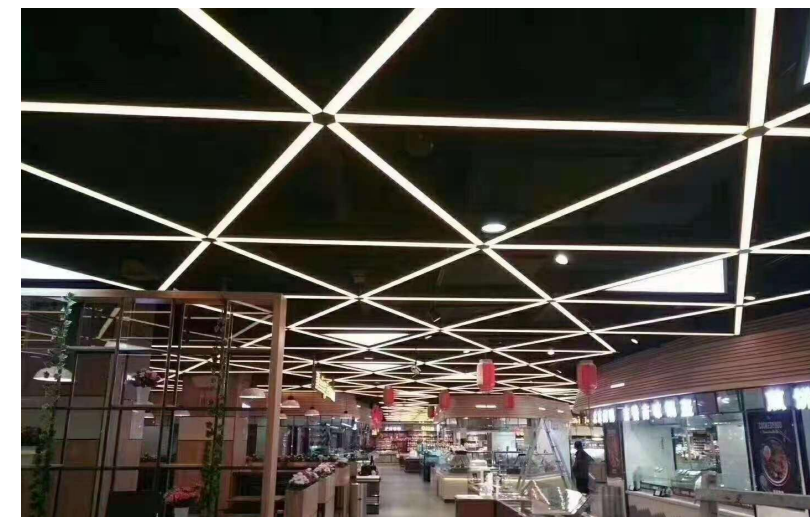
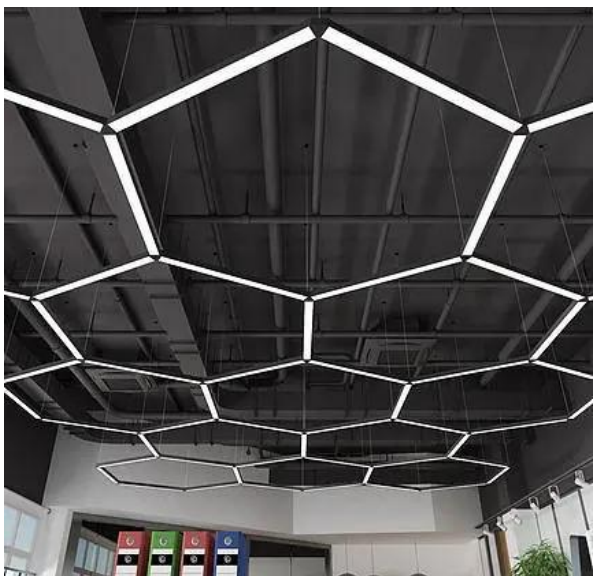
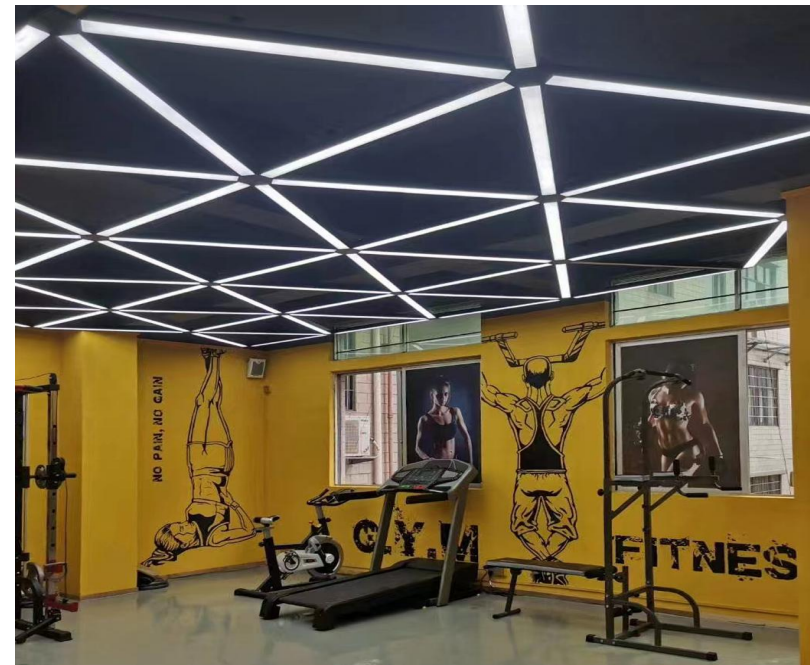
4*90°



6*60°



Application of 50/70



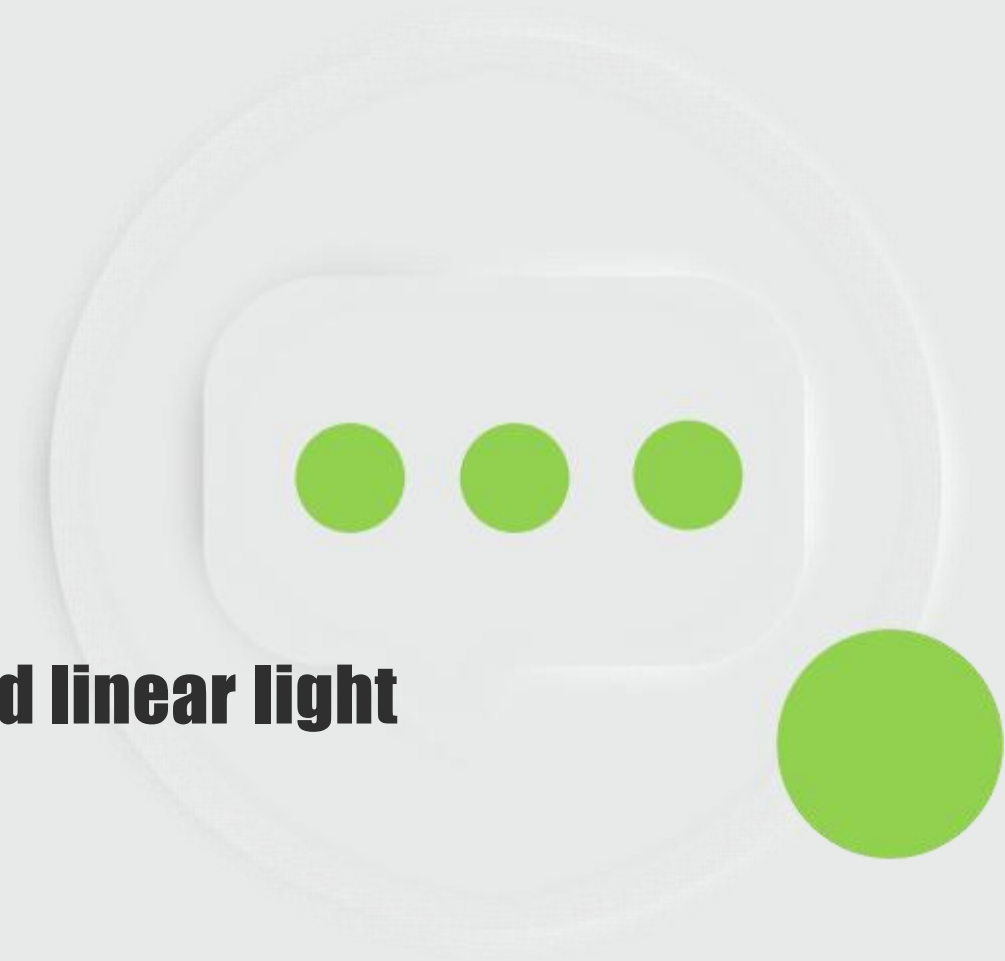
电性参数/ Specification

尺寸/Size	50 /Width	70 /Width	备注
功率 power	40W	40W	0 - 10V, Dali, Zigbee, bluetooth, wifi, Radar sensor dimnable
电压 voltage	AC220 -240V	AC220 -240V	
PF值 PF value	0.9	0.9	
色温 CCT	3000 - 6500K 2700 - 6500K Tunnable CCT	3000 - 6500K 2700 - 6500K Tunnable CCT	
显指 CRI	80/90	80/90	
光效 efficiency	80lm/w;100lm/w;130lm/w	90lm/w;100lm/w;130lm/w	
防护等级 IP	IP20	IP20	
颜色 color	standard :matt black/white	standard :matt black/white	
尺寸 size	1145* 50*60mm	1150*70*60mm	
防眩UG RAnti-glare	—	≤16	
出光方式 Light output method	Down light	Down light	
光学部件 Opticalaccesseries	Reflector+lens 60°, 80° + PC 120°	Lens 30°, 60°, 90° +PC 120°	
外箱尺寸 ctn size	1205*435* 190mm	1205*435*230mm	
装箱数量 qty/ctn	10PCS/ctn	10pcs/ctn	
单支净重 NW	1.05kg	1.25kg	
整箱毛重 GW	12.5 kg	14.5 kg	

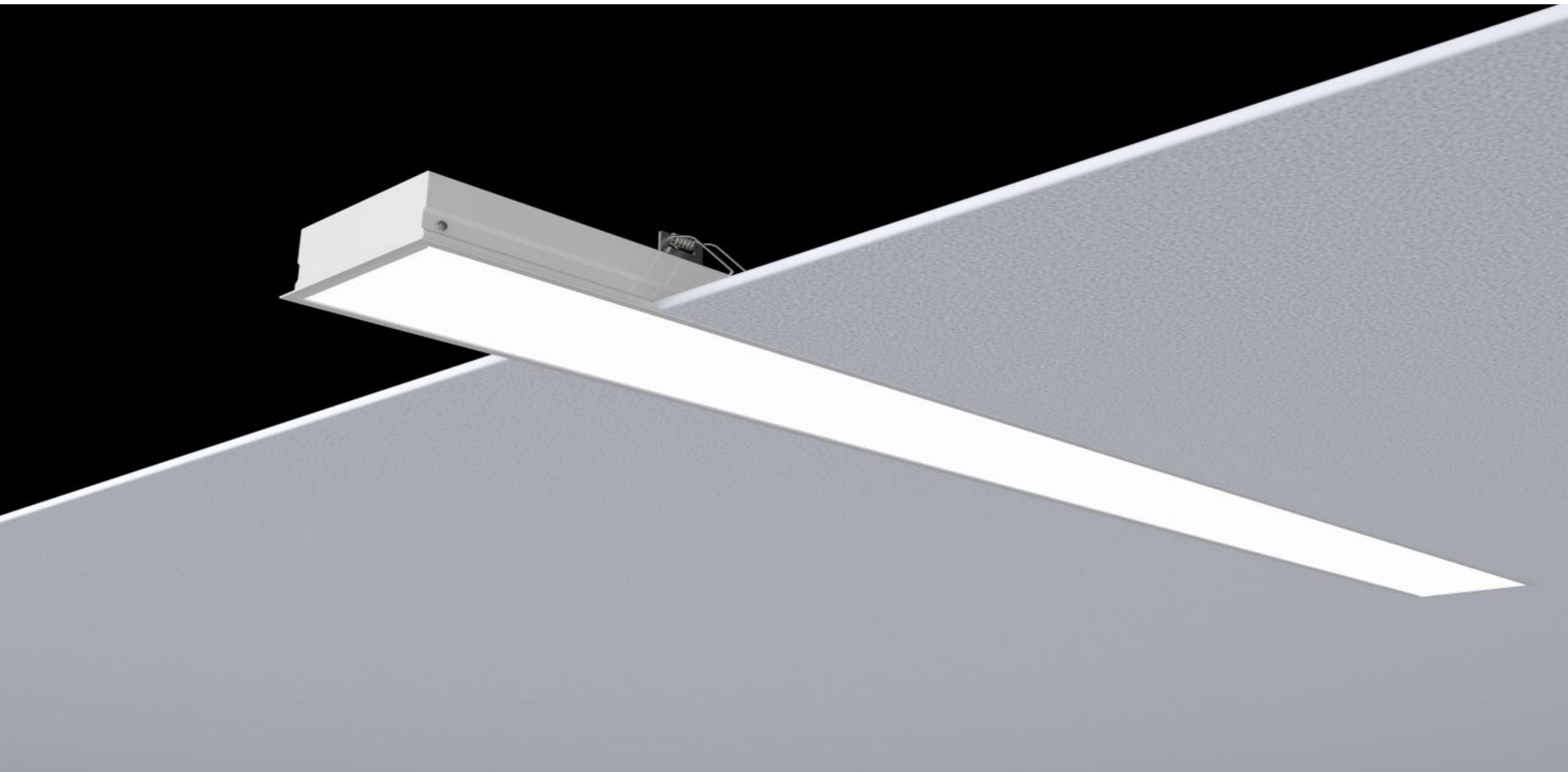
2.4

公司主营产品 | 辊压嵌入式线条灯

Company's main products / Recessed linear light



F100 Recessed-in Linear lights



F100 Recessed-in Linear lights



自动生产线 Automatic production line

采用全程自动流水线辊压设备，生产率高
Adopt the whole automatic assembly line roller press equipment, high productivity

辊压工艺 Rolling process

采用辊压工艺彩涂板灯壳，外形极简，现代风
Rolling process color coated plate lamp housing, minimalist appearance, modern style

工艺 Craftsmanship

安装 Installation

安装简易 Easy installation

嵌入式安装用于嵌接于天花板内，安装易上手
Recessed installation for inset into the ceiling, easy to install

卡扣配件 Snap Fittings

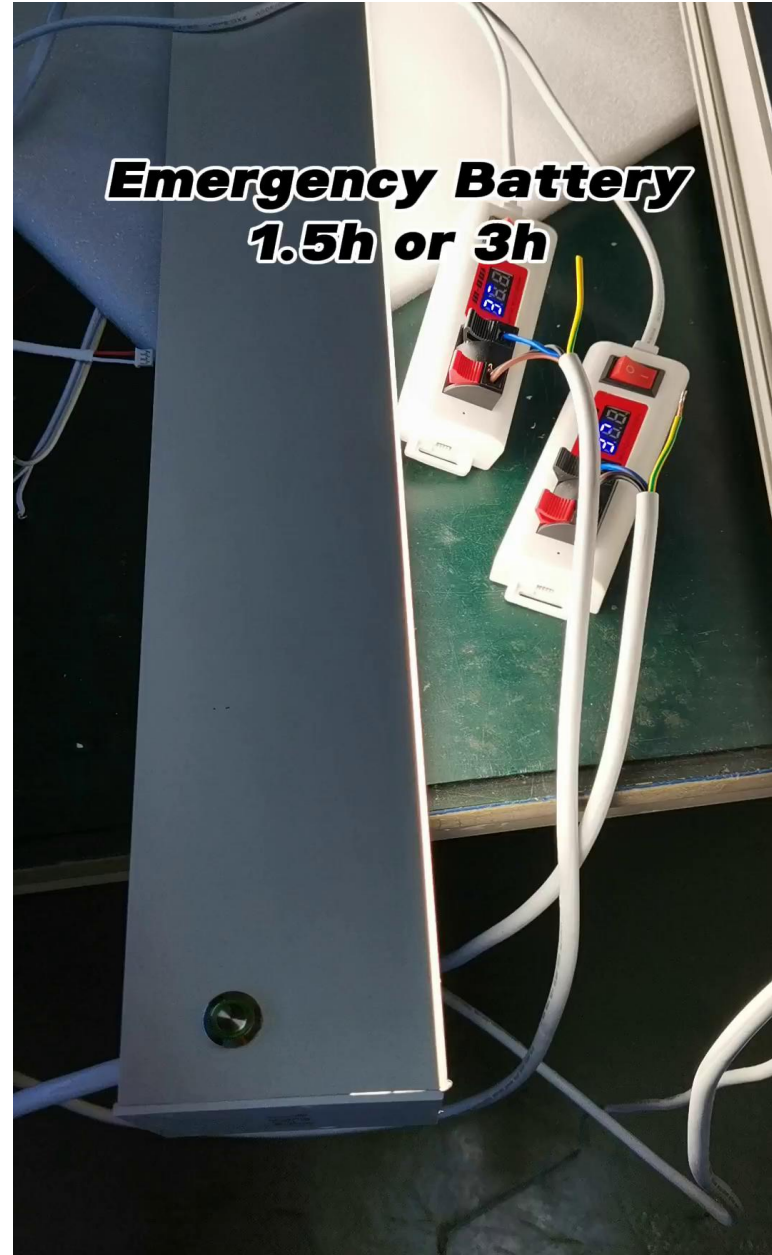
采用材质卡扣，暗装拆卸，便捷稳定性强
The use of material clips, concealed disassembly, convenient stability

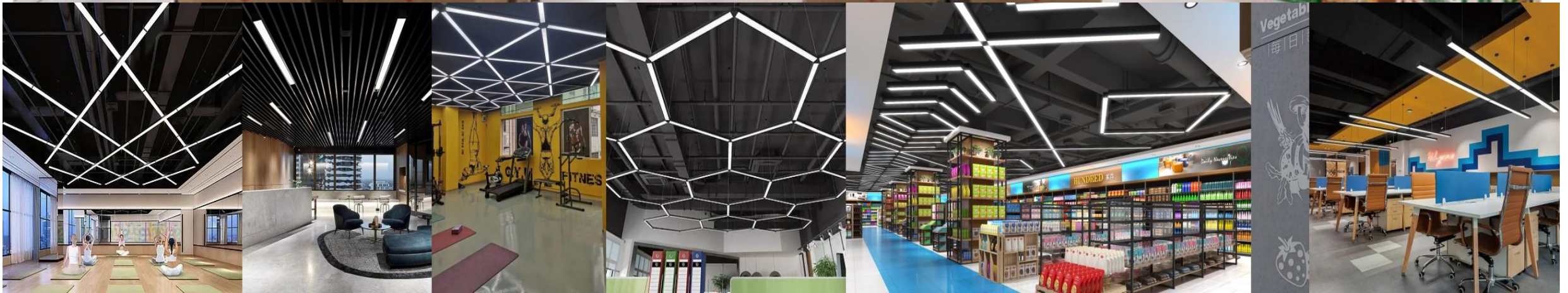
Standard Specifications

尺寸/Size	70 /Width	100/width	150 /Width	备注
功率 power	40W	40W	24W/36W	0 - 10V, Dali, Zigbee, bluetooth, wifi, Radar sensor dimnable
电压 voltage	AC220 -240V	AC220 -240V	AC220 -240V	
PF值 PF value	0.9	0.9	0.9	
色温 CCT	3000 - 6500K 2700 - 6500K Tunnable CCT			
显指 CRI	80	80	80	
光效 efficiency	100lm/w	100lm/w	100lm/w	
防护等级 IP	IP20			
颜色 color	matt black/white	matt black/white	matt black/white	
尺寸 size	1200*70*40mm	1200*100*40mm	1200*150*40mm	
发光角度 Luminous angle	120°			
出光方式 Light output method	下出光 Down light			
光学部件 Opticalaccesseries	PC			
外箱尺寸 ctn size	1270*305* 250mm	1270*300*175mm	1270*310*225mm	
装箱数量 qty/ctn	8pcs/ctn	4pcs/ctn	4pcs/ctn	
单支净重 NW	1.2kg	1.4kg	1.85kg	
整箱毛重 GW	11.1kg	7.0kg	8.7kg	











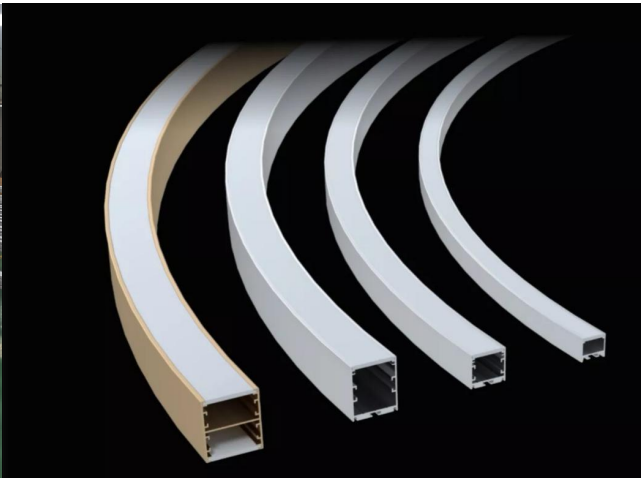
2.5

公司定制产品 | 异形线条灯

Company's Customize products



Curve, circle and different shaps etc.



Heterosexual and various sizes of soft film ceiling:

Standard Size: 80*80CM / 100*100CM

Installation: Surface-mounted/ Suspension

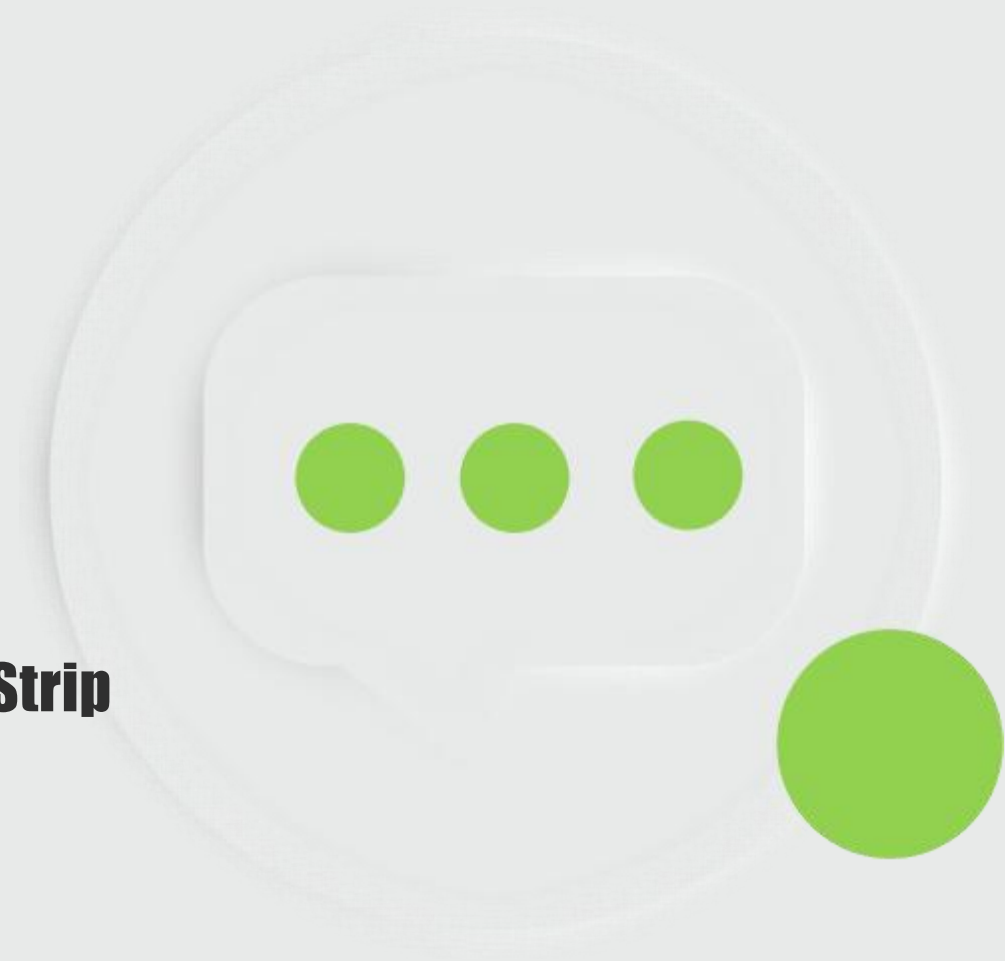




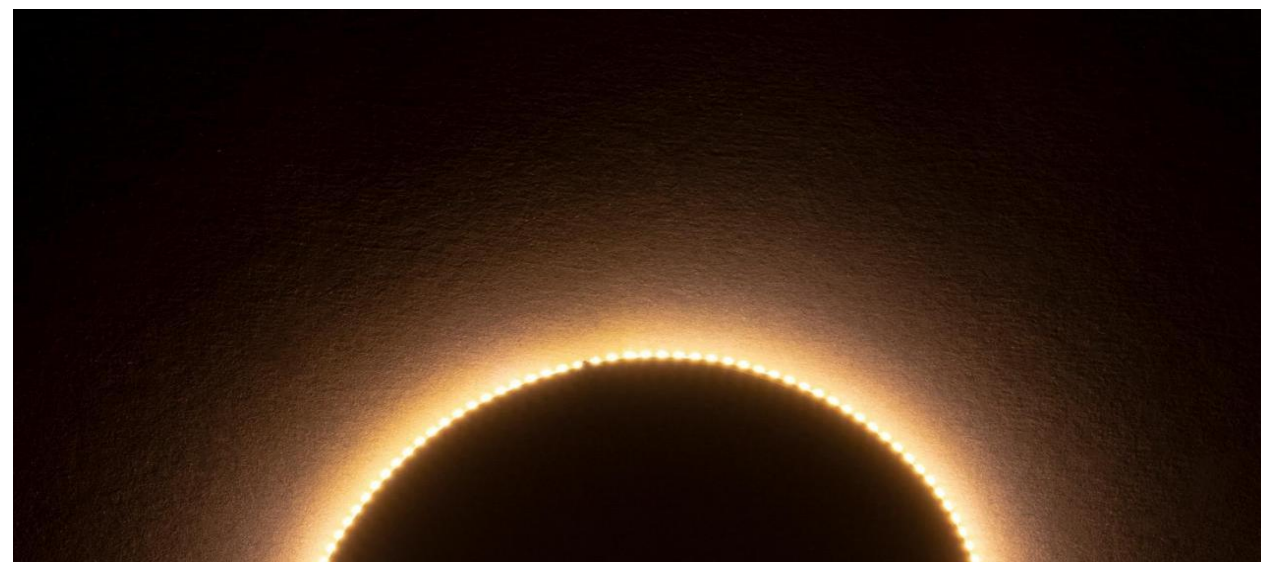
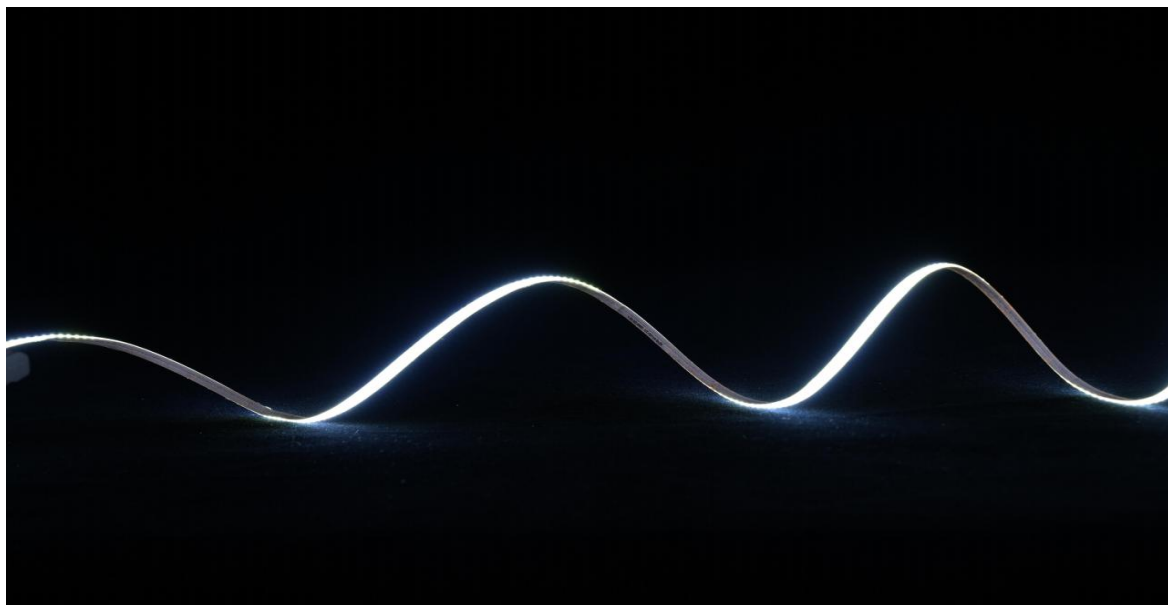
2.6

公司主营产品 | 特种灯带

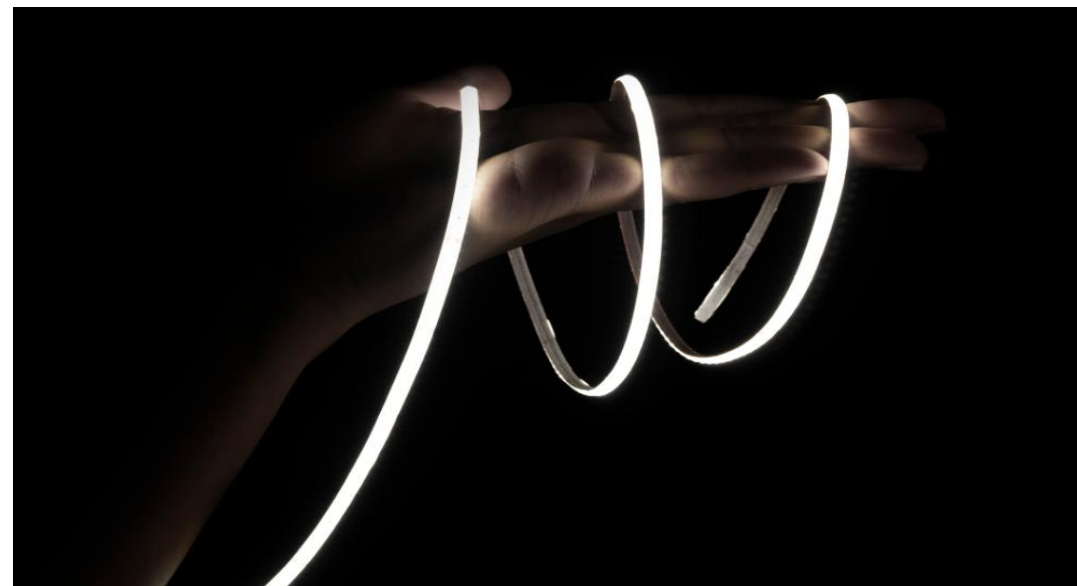
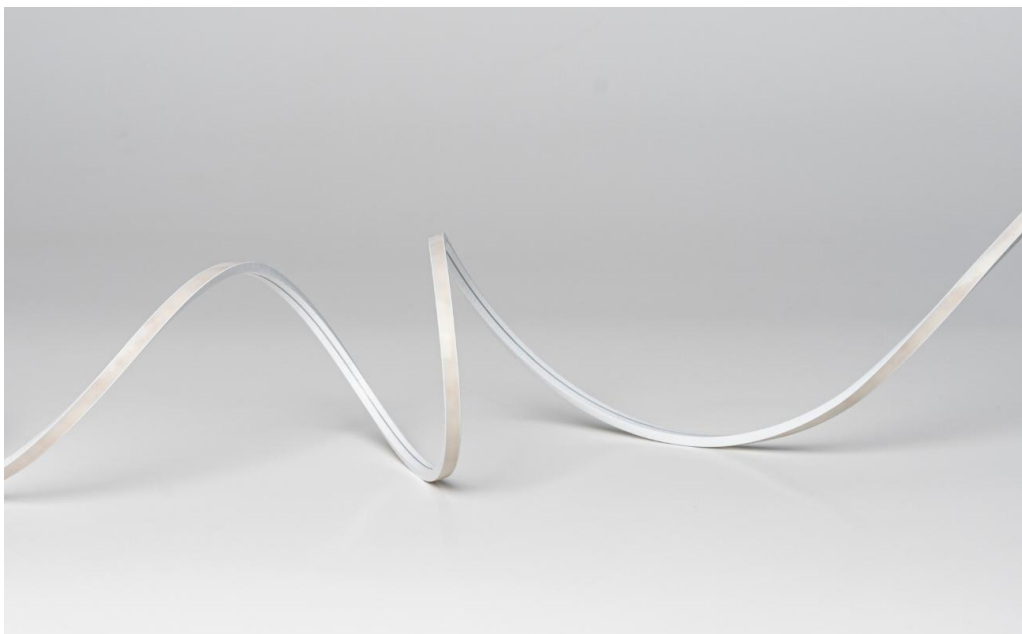
company's main products / Polarized Light Strip



Mini Light Strip/ Mini灯带



Mini Light Strip/ Mini灯带



Core Features

尺寸超小 Super small size

Compared with traditional light strips
Mini strip light size is super small

可分光Spectrable

Compared with PCB strip /
CSP Mini strip can
split light

02

04

01

05

03

五面发光 Five-sided luminous

Compared with traditional
light strips Five sides of
light , light- emitting surface
super large

光效高 High luminous efficiency

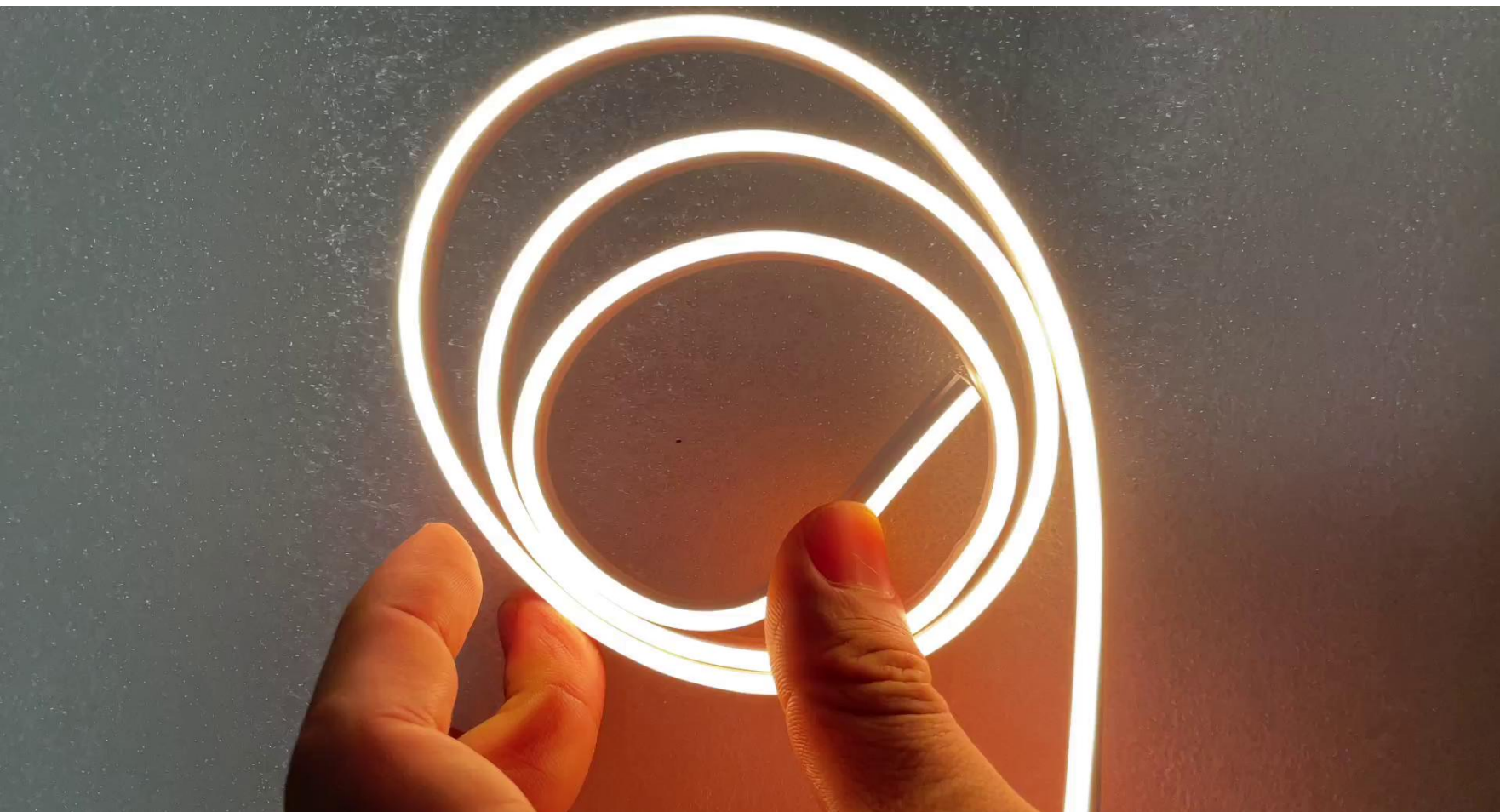
Compared with ordinary light strips
and COB/ CSP Mini strip light
efficiency is super high

新工艺 New Processes

Compared with ordinary light
strips Adopt new technology,
high stability, easy maintenance.

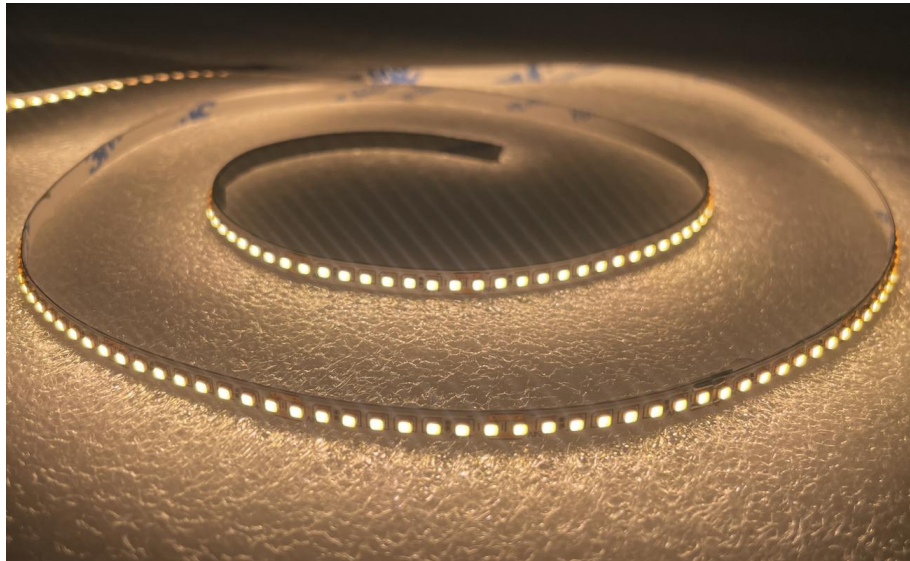
尺寸/Size	4mm /Width 4*8mm/6*3mm/6*6mm	备注
功率 power	7W/M	可做0-10V , DALI, ZIGBEE, 蓝牙 , wifi, 调光调色 can be made 0- 10V, Dali, Zigbee, bluetooth, wifi, dimmable
灯数 LED Qty	240leds or 320leds	
电压 voltage	DC12V/24V	
PF值 PF value	0.9	
色温 CCT	3000/4000/6500K	
显指 CRI	80/90	
防护等级 IP	IP20/ IP54/ IP65/IP67	
出光方式 Light output method	Front lighting、 Side Lighting	

Mini Light Strip/ Mini灯带



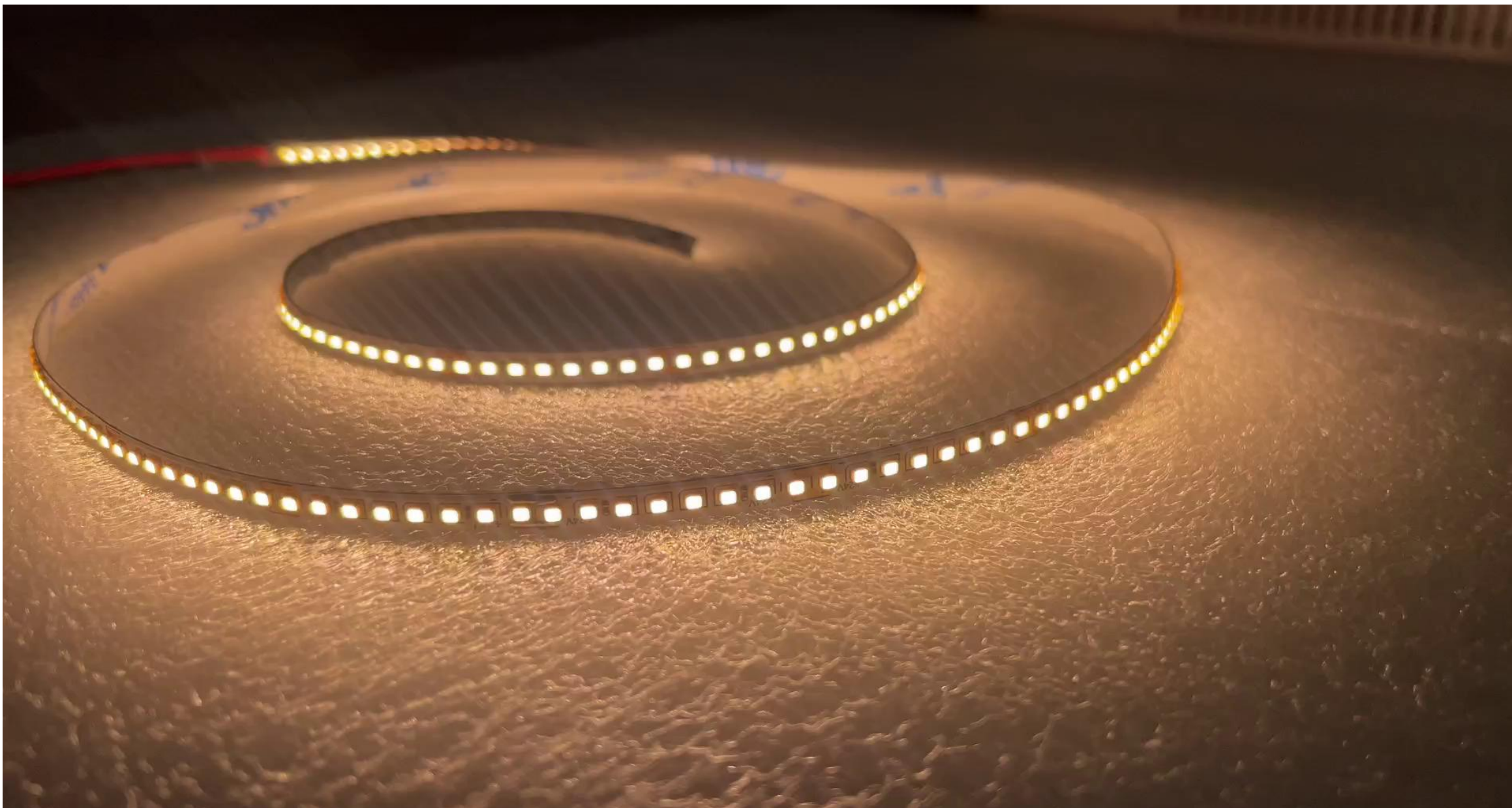
RGB软灯带
RGB flexible strip lights

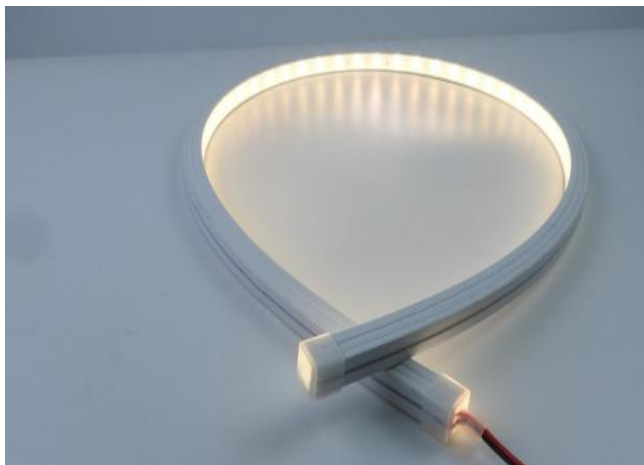
High Efficiency Light Strip/高光效灯带



尺寸/Size	8mm /Width	备注
功率 power	7W/M	可做0-10V , DALI,ZIGBEE, 蓝牙 wifi,调光调色 can be made 0-10V, Dali, Zigbee, bluetooth, wifi, dimmable
灯数LED Qty	128leds/m	
电压 voltage	DC 12V/24V	
PF值 PF value	0.9	
光效 Light Efficiency	150lm/w	
色温 CCT	3000/4000/6500K	
显指 CRI	80/90	
防护等级 IP	IP20	
出光方式 Light output method	Front lighting	

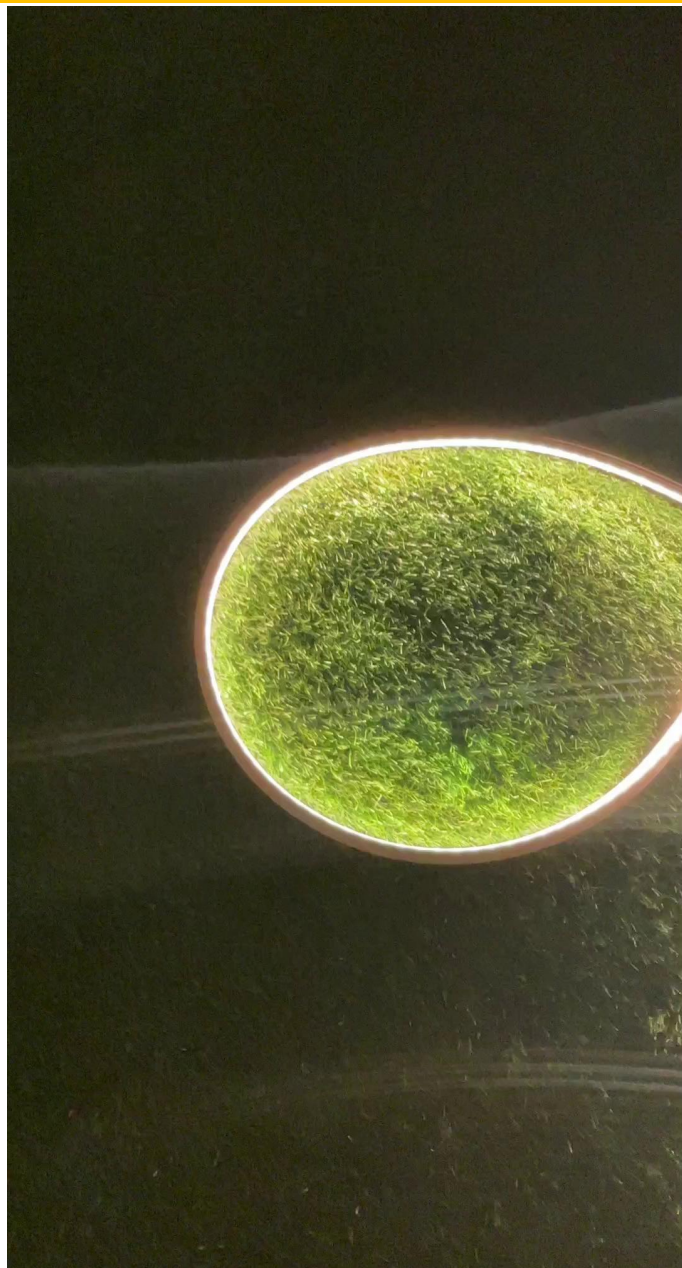
High Efficiency Light Strip/高光效灯带







尺寸/Size	8mm /Width	备注
功率 power	7W/M	<p>可做0-10V , DALA,ZIGBEE,蓝牙 wifi,调光调色</p> <p>can be made 0- 10V, Dali, Zigbee, bluetooth, wifi, dimmable</p>
灯数 LED Qty	120leds/m 56leds/m	
电压 voltage	DC 12V/24V	
洗墙高度 Wall washer	5-7M	
光效 Light Efficiency	60lm/w	
色温 CCT	3000/4000/6500K	
显指 CRI	80/90	
防护等级 IP	IP20 / IP65	
出光方式 Light output method	Front Direct 30°	

Wall Washer Light Strip / 洗墙灯带

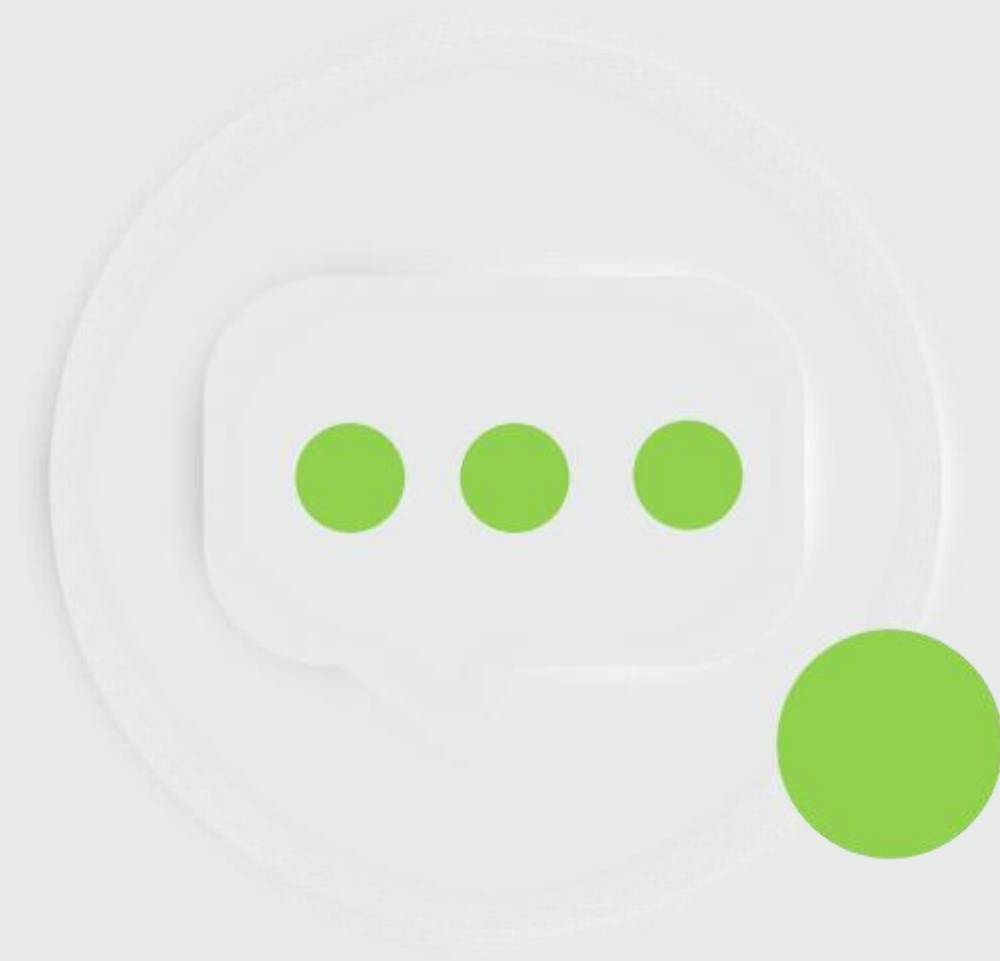




03

企业荣誉资质

Enterprise honor and qualification









ANNEX I


Test	Model	Voltage V
1	5050-XX-XXXXX-XX-12-X-XX	12
2	5050-XX-XXXXX-XX-24-X-XX	24
3	2835-XX-XXXXX-XX-12-X-XX	12
4	2835-XX-XXXXX-XX-24-X-XX	24
5	3528-XX-XXXXX-XX-12-X-XX	12
6	3528-XX-XXXXX-XX-24-X-XX	24
7	3014-XX-XXXXX-XX-12-X-XX	12
8	3014-XX-XXXXX-XX-24-X-XX	24
9	2216-XX-XXXXX-XX-12-X-XX	12
10	2216-XX-XXXXX-XX-24-X-XX	24

Remarks:
The first four letters are the second part 3 letters + the third part 5 letters + the fourth part 2 letters + the fifth part 2 letters + the sixth part 1 letter + the seventh part 2 letters



Shenzhen Southern LCS Compliance Testing Ltd
8 Area, 1/F, Building B, Zhongguo Green Hi Street, Guangdong New District, Shenzhen City
Tel: (86)755-29871329 Fax: (86)755-29871330
http://www.lcs-cert.com Email: webmaster@lcs-cert.com

证书号第 9080224 号



实用新型专利证书

实用新型名称：铝材挤出式聚光线条灯

发明人：陈奇; 黄强; 张培全; 阳刚

专利号：ZL 2019 2 0524902.5

专利申请日：2019年04月17日


专利权人：深圳市绿色半导体照明有限公司

地址：518000 广东省深圳市宝安区石岩街道莲心社区洲石路号筑联达电子科技园西座3楼

授权公告日：2019年11月29日 授权公告号：CN 20970

国家知识产权局依照中华人民共和国专利法和专利审查指南，决定授予发明专利并在专利登记簿上予以登记。专利自授权公告之日起生效。自申请日起算。

专利证书记载专利登记簿的法律状况。专利权的转移、质押、优先权人的姓名或者名称、国籍、地址变更等事项记载在专利登记簿上。



局长 申长雨

2019年11月

第 1 页 (共 2 页)

CERTIFICATE of Conformity



Reference No. : LCS18041901985

Applicant : Light Green International CO.,LTD

Address : 3F kaixinda industrial park,zhoushi Road no.0 shenzhen

Trademark : Green lighting

Product : Strip Light

Model(s) : See model list

Parameters : See model list

The submitted products have been tested by us with the listed standards and found in compliance with the following European Directives:
The LVD Directive 2014/35/EU
EN 60598-2-30:2015; EN 60598-1:2015; EN 62471:2008; EN 62463:2015; EN 62031:2008+A1:2013+A2:2015

The tests were performed in normal operation mode. The test results apply only to the particular sample tested and to the specific tests carried out. This certificate applies specifically to the sample investigated in our test reference number only.

The CE markings as shown below can be affixed on the product after preparation of necessary technical documentation.

Other relevant Directives have to be observed.




Date of issue: May 17, 2019



Shenzhen Southern LCS Compliance Testing Laboratory Ltd
8 Area, 1/F, Building B, Zhongguo Green High-tech Industrial Park, Wenge Road, Nanshan District, Guangdong Street, Guangdong New District, Shenzhen City
Tel: (86)755-29871329 Fax: (86)755-29871330
http://www.lcs-cert.com Email: webmaster@lcs-cert.com

1 / 2



实用新型专利证书

申请人：黄强; 张培全; 阳刚

2019 2 0524902.5

2019年04月17日

深圳市绿色半导体照明有限公司

广东省深圳市宝安区石岩街道莲心社区洲石路49号筑联达电子科技园西座3楼

2019年01月07日 授权公告号：CN 209909637.0

依照中华人民共和国专利法和专利审查指南，决定授予专利权。颁发实用新型专利证书予以登记。专利自授权公告之日起生效。专利权的期限为十年，自申请日起算。

专利证书记载专利登记簿的法律状况。专利权的转移、质押、无效、终止、恢复和专利申请人的姓名或者名称、国籍、地址变更等事项记载在专利登记簿上。



局长 申长雨

2019年01月07日

第 1 页 (共 2 页)



intertek
Test. Inspect. Assess.

This authorizes the application of the Certification Mark(s) shown below in Covered section when made in accordance with the conditions set forth in Report. This authorization also applies to multiple base model(s) identification Report.

This document is the property of Intertek Testing Services and is not to be applied only at the location of the Party Authorized To Apply Mark.

Applicant: Light Green International Co., Ltd. **Manufacturer:**
3F, West Block, KooKinDa Industrial Park, Zhuzhi Road No.49, Shilin Town, Shenzhen District, Shenzhen, Guangdong, 518108
Address:
Country: CHINA **Country:**
Contact: Fan Yocai **Contact:**
Phone: 0755-29528100 **Phone:**
FAX: - **FAX:**
Email: fyo@lghtgreen.cn **Email:**

Party Authorized to Apply Mark: Same as Manufacturer
Report Issuing Office: Intertek Testing Services Shanghai Ltd

Control Number: 4007566 **Authorized by:** TO: US

RECOMMENDED COMPLIANCE

Intertek

This document supersedes all previous Authorizations to Mark. The manufacturer shall be responsible for ensuring their site is a participant in the regulatory operations herein to the extent and within the jurisdiction, report, standards, technical requirements, other reports or factors in order to be eligible for the authorization to mark. They shall be subject to participation in the activities of the laboratory in order to maintain the authorization to mark. The manufacturer shall be responsible for ensuring that the product is in compliance with the applicable regulatory requirements and follows the correct procedures for the purpose of a satisfactory report. The use of the Laboratory's facilities, control and other site activities shall be subject to the Laboratory's approval.

Intertek Testing Services HK, Inc.
143 East Allenway Road, Aberdeen, Hong Kong,
Telephone: 800-345-3007 or 847-439-3007 Fax: 7

Standard(s): Low Voltage Lighting Systems (UL 2108, 2115, E2, 2+R, 300kV);
General Requirements For Luminaires (ROE90) (CSA, C22.96)

Product: LED strip lights

Models: 5090, 2835, 3528, 3014 or 2216, followed by -, followed by the number followed by four numbers, maybe followed by one letter; may be followed by two letters, maybe followed by five letters, followed by -, followed by 12 or 24, followed by -, followed by 1 or 18W numbers.

ATM for Report 180500218558-001 Page 1 of 1



CERTIFICATION EUROPE HONGKONG

认证证书
证书编号: 30135775E

证明

深圳市绿色半导体照明有限公司
深圳市宝安区石岩街道浪心社区洲石路49号凯欣达电子科技园西座3楼

环境管理体系认证符合标准
ISO14001:2015

环境管理体系适用于
LED显示屏、LED半导体照明灯具的生产（不含除油、酸洗、喷漆）、销售所涉及的环境管理活动

发证日期: 2019-06-21 证书有效期至: 2022-06-20

获证组织在证书有效期内每年至少接受一次监督审核, 并将监督审核合格标识粘贴于证书指定位置, 证书方为有效。

IAF **UKAS**

签发: **James** 12个月 24个月

香港认证(香港)有限公司 WWW.CCE-HK.COM




CCC 中国国家强制性产品认证证书

附录 第1页共1页
证书编号: 2019011001238575 型号: 2408004

序号	型号	功率
1.	DD-F157	30W(99×0.5W/LED 模块)
2.	DD-F156	26W(99×0.5W/LED 模块)
3.	DD-F167	30W(99×0.5W/LED 模块)
4.	DD-F166	26W(99×0.5W/LED 模块)
5.	DD-F175	36W(240×0.5W/LED 模块)
6.	DD-F176	30W(240×0.5W/LED 模块)
7.	DD-F174	36W(240×0.5W/LED 模块)
8.	DD-F181	30W(240×0.5W/LED 模块)
9.	DD-F173	36W(240×0.5W/LED 模块)
10.	DD-F177	30W(240×0.5W/LED 模块)
11.	DD-F172	36W(240×0.5W/LED 模块)
12.	DD-F178	30W(240×0.5W/LED 模块)
13.	DD-F171	36W(320×0.5W/LED 模块)
14.	DD-F179	30W(320×0.5W/LED 模块)
15.	DD-F170	36W(400×0.5W/LED 模块)
16.	DD-F180	30W(400×0.5W/LED 模块)

注: 此附录与证书同时使用时有效。

CQC 主任: **陆楠**

中国质量认证中心

http://www.cqc.com.cn 中国·北京·朝阳区西四环中路1000号 电话: +86 10 83888888



CCC 中国国家强制性产品认证证书

证书编号: 2019011001238575

委托人名称、地址
深圳市绿色半导体照明有限公司
深圳市宝安区石岩街道浪心社区洲石路49号凯欣达电子科技园西座3楼

生产者(制造商)名称、地址
深圳市绿色半导体照明有限公司
深圳市宝安区石岩街道浪心社区洲石路49号凯欣达电子科技园西座3楼

生产企业名称、地址
深圳市绿色半导体照明有限公司
深圳市宝安区石岩街道浪心社区洲石路49号凯欣达电子科技园西座3楼

产品名称和系列、规格、型号
定式灯具(吊线灯, 吊式, LED模块调交流电子控制装置, 1类, IP20, ta: 40°C, 适宜直接安装在普通可燃材料表面)
见附件, 220-240V~ 50/60Hz

产品标准和技术要求
117625, 1-2012; GB/T17743-2017; GB7000, 1-2015; GB7000, 201-2008

本产品符合强制性产品认证实施规则 CMAA-C10-01:2014 的要求, 特此认证。

发证日期: 2019年10月17日 有效期至: 2024年10月17日
证书有效期内本证书的有效性依据发证机构的定期监督获得保持。
本证书的相关信息可通过国家认监委网站 www.cnca.gov.cn 查询

CQC 主任: **陆楠**

中国质量认证中心

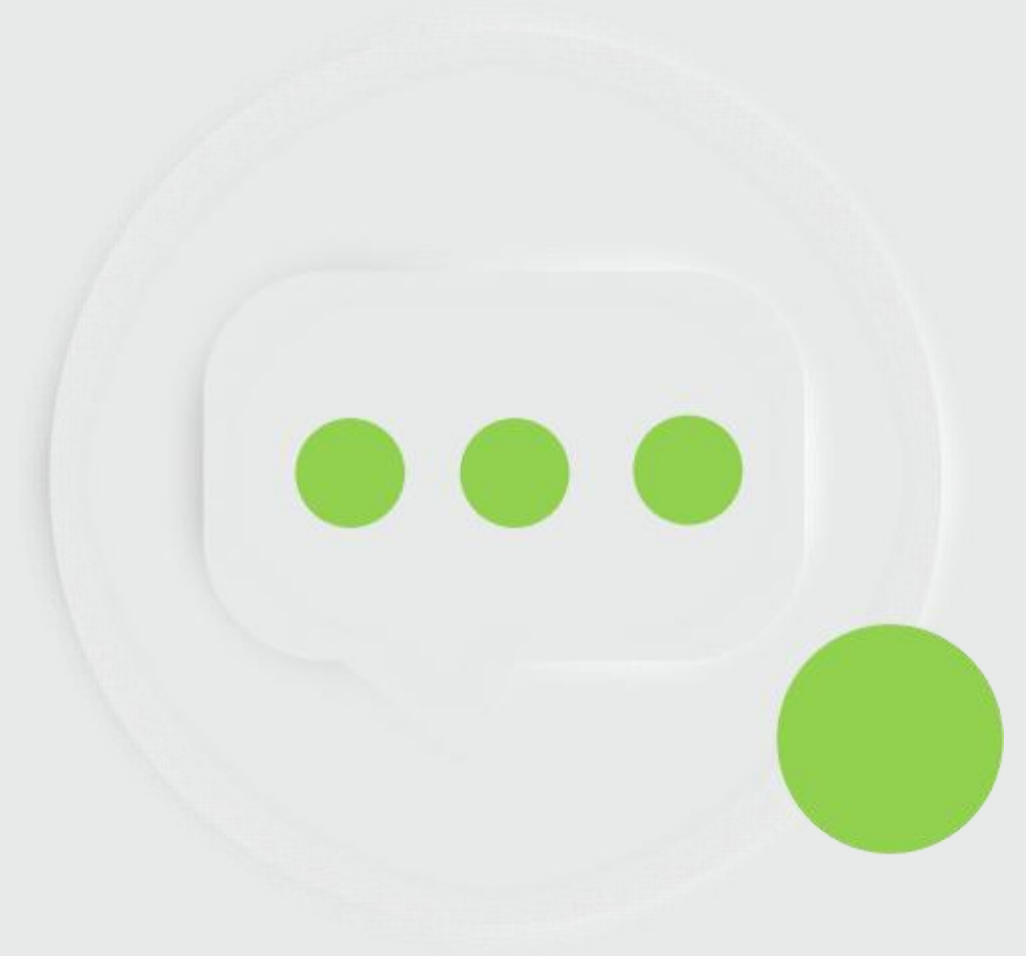
004



04

公司合作客户

Company cooperation customers







THANKS

Light Green International Co.,Ltd.